



Similar to figure

Data sheet

Hydraulic data

Maximum operating pressure P_N	10 bar
Delivery head for Q_{min} H_{Qmin}	5.6 m
Max. volume flow Q_{max}	5.1 m ³ /h
Min. fluid temperature T_{min}	2 °C
Max. fluid temperature T_{max}	65 °C
Min. ambient temperature T_{min}	0 °C
Max. ambient temperature T_{max}	40 °C
Max. permitted total water hardness	3.21 mmol/l (18°dH)

Motor data

Mains connection	1~230 V, 50 Hz
Rated power P_2	38 W
Rated current I_N	0.43 A
Max. speed n_{max}	1900 1/min
Power consumption $P_{1 max}$	99 W
Emitted interference	EN 61000-6-3
Interference resistance	EN 61000-6-2
Protection class motor	IP44
Insulation class	F
Threaded cable connection	1 x PG11
Motor protection	no

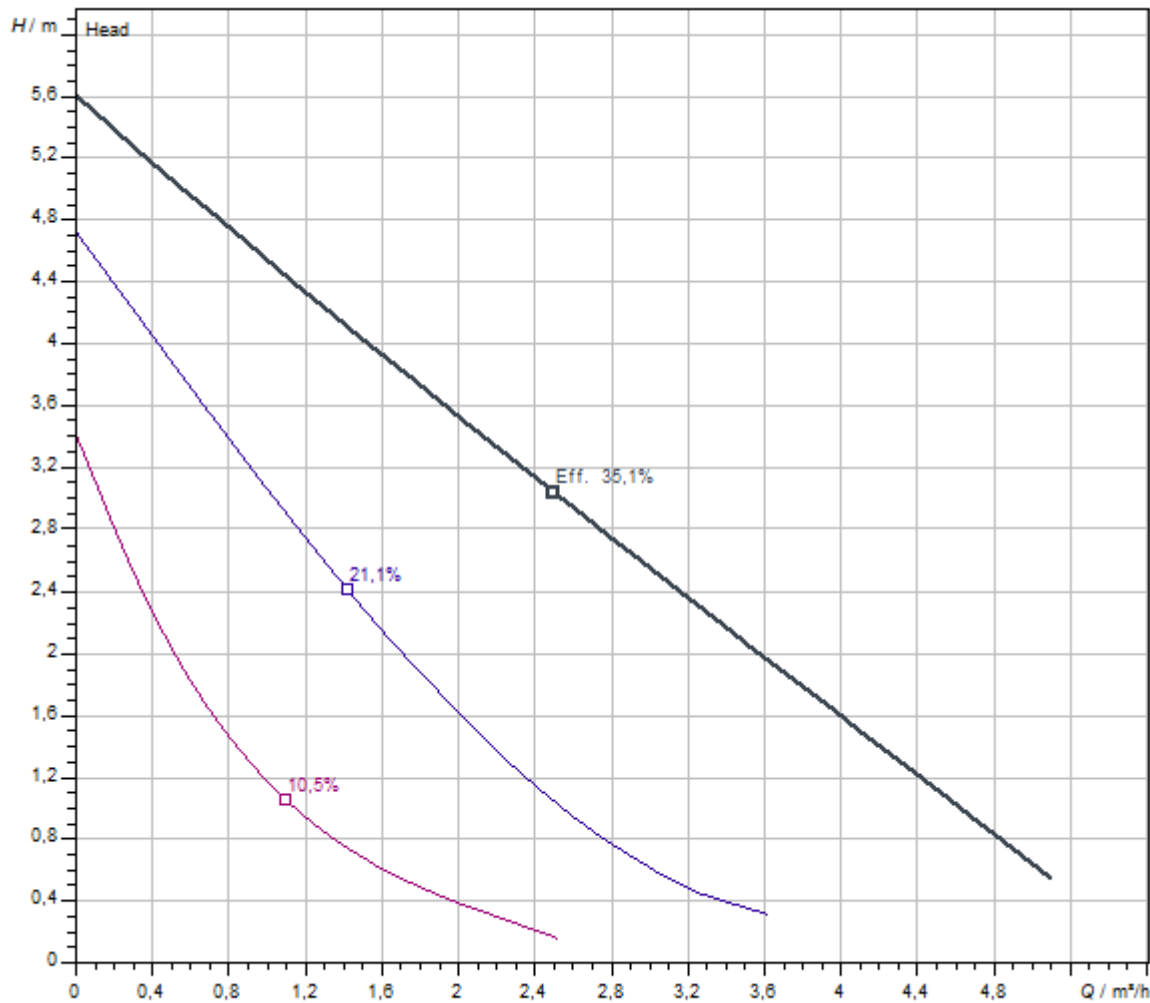
Materials

Pump housing	Bronze, CC499K
Impeller	PPE-GF30
Shaft	Oxide ceramic
Bearing	Carbon, synthetic resin-impregnated

Installation dimensions

Pipe connection on the suction side D_Ns	G 1½
Pipe connection on the discharge side D_Nd	G 1½
Port-to-port length L_0	180 mm

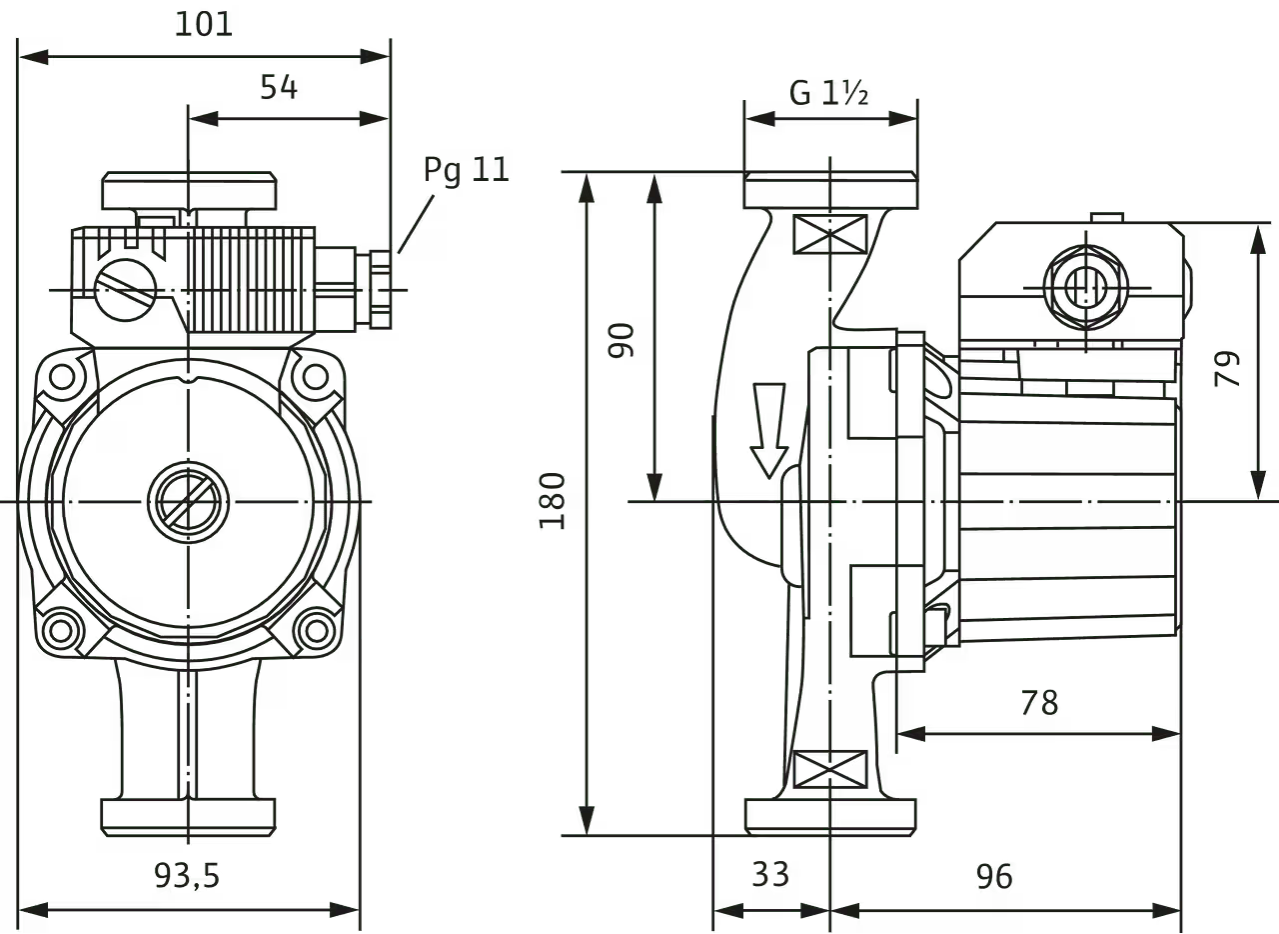
Pump curves



Fluid media	Water 100 %
Fluid temperature T	20,00 °C
speed at duty point n hydr. @ OP	2.900 1/min

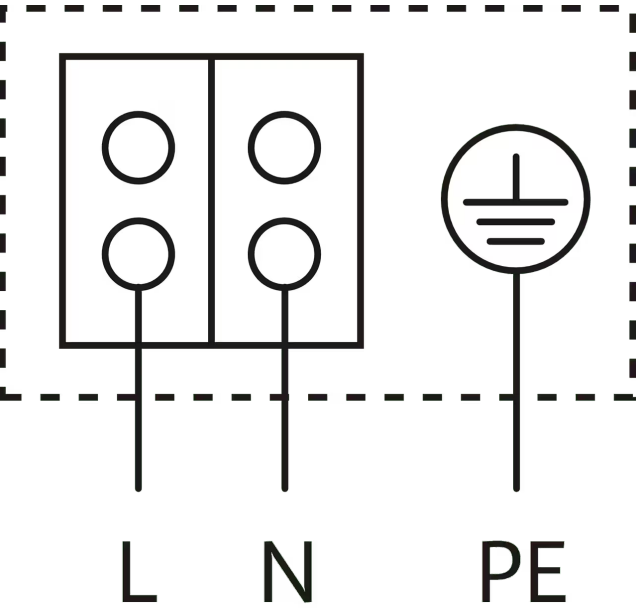
Dimensions and dimensions drawings

Star Z



Wiring diagram


Star-E



Blocking current-proof motor
Single-phase motor (EM) 2-pole - 1~230 V, 50 Hz
With built-in capacitor

Ordering information

Product data

Brand	Wilo
Product description	Star-Z 25/6-3
Article number	4047573 
EAN number	4016322431244
Colour	Green
Minimum order quantity	1
Date of sales availability	2010-01-01

Packaging

Packaging type	Cardboard box
Packaging property	Sales packaging
Pieces per pallet	256
Number per layer	32

Dimension, weight

Length with packaging	147 mm
Length <i>L</i>	134 mm
Height with packaging	100 mm
Height <i>H</i>	94 mm
Width with packaging	187 mm
Width <i>W</i>	180 mm
Gross weight, approx. <i>m</i>	2.7 kg
Net weight, approx. <i>m</i>	2.6 kg

Tender text

This circulator is suitable only for drinking water.
Domestic hot water circulator, glandless pump with manual three-stage variable speed control for pipe installation.

Blocking-current proof motor. Pump housing made of bronze, impeller made of fibreglass-reinforced plastic, ceramic shaft with resin-impregnated carbon friction bearings.

Operating Data

Max. fluid temperature T_{\max}	65 °C
Min. fluid temperature T_{\min}	2 °C
Min. ambient temperature T_{\min}	0 °C
Max. ambient temperature T_{\max}	40 °C
Temperature range at max. ambient temperature +40 °C T	+2...+65
Maximum operating pressure PN	10 bar
Max. permitted total water hardness	3.21 mmol/l (18°dH)

Motor data

Emitted interference	EN 61000-6-3
Interference resistance	EN 61000-6-2
Mains connection	1~230 V, 50 Hz
Power consumption $P_{1\max}$	99 W
Max. speed n_{\max}	1900 1/min
Rated current I_N	0.43 A
Protection class motor	IP44
Threaded cable connection	1 x PG11


Materials

Pump housing	Bronze, CC499K
Impeller	PPE-GF30
Shaft	Oxide ceramic
Bearing	Carbon, synthetic resin-impregnated

Installation dimensions

Pipe connection on the suction side DN_s	G 1½
Pipe connection on the discharge side DN_d	G 1½
Port-to-port length L_0	180 mm

Ordering information

Brand	Wilo
Product description	Star-Z 25/6-3
Net weight, approx. m	2.6 kg
Article number	4047573 

Mechanical accessories

Pipe installation

Screwed connections/adapters

Screwed connection R 1/2 x G 1 1/2, 1 Set	112047195
Screwed connection R 1/2 x G 1 1/2, 24 Set	112047596
Adapter G 1 1/2/G 2	4105914

Pipe installation, adapter fitting

Threaded adapter R

Threaded adapter R 5, MS	110678298
Threaded adapter R 12, MS	110788294

Thermal insulation

Size 14 thermal insulation shell

Thermal insulation shell (Size 14)	4046444
------------------------------------	---------

Electrical accessories

Pump control

Timer switch SK 601N

Switchgear SK 601N	2120443
--------------------	---------

Motor protection

SK 602N

Switchgear SK 602N	2120444
--------------------	---------

SK 622N

Switchgear SK 622N	2120445
--------------------	---------

Services

With Wilo as your partner, you can not only be sure of choosing high-quality product solutions, but also of benefiting from a comprehensive, worry-free package of well thought-out services. We collaborate to develop a service concept tailored to your individual needs; with our expertise and personal consultancy, we make sure that the operation of your systems is as energy-efficient, reliable and economical as possible. All the while our competent Wilo service technicians are ready to assist you with fast, reliable and on-time support.

Recommended services

Wilo-Live Assistant Service	2216415
System Optimisation Glandless pumps	2219250
Energy Solutions Glandless pumps	2219285

More suitable services

Extended Warranty Glandless pumps	2219589
Supervision Glandless pumps	2219320
Installation Glandless pumps	2219355
Commissioning Glandless pumps	2219390
Maintenance BASIC Glandless pumps	2219530
Maintenance COMFORT Glandless pumps	2219416
Maintenance PREMIUM Glandless pumps	2219545
Repair Glandless pumps	2219609