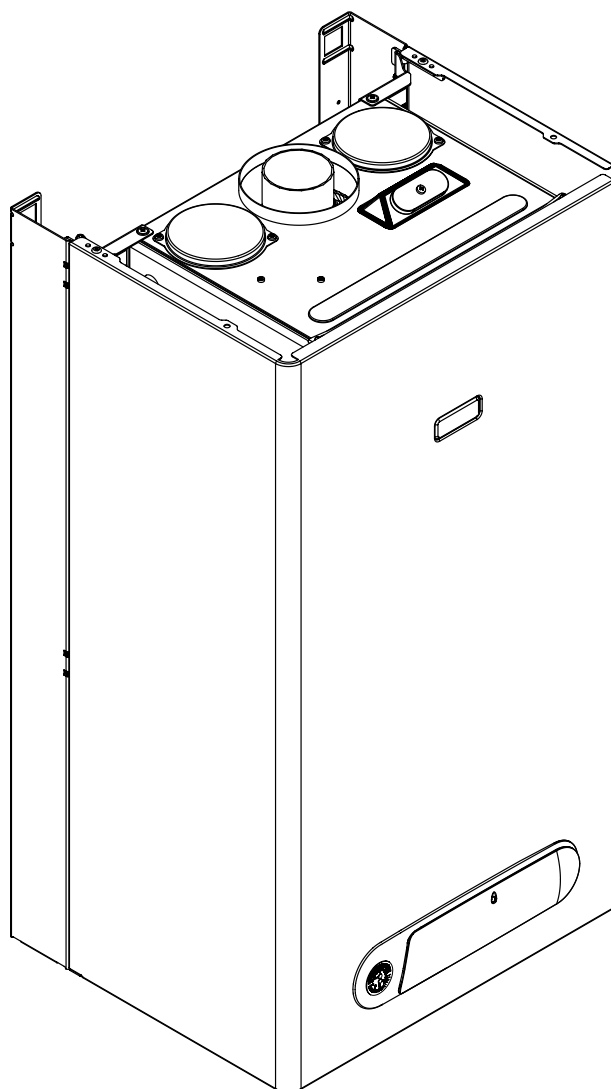
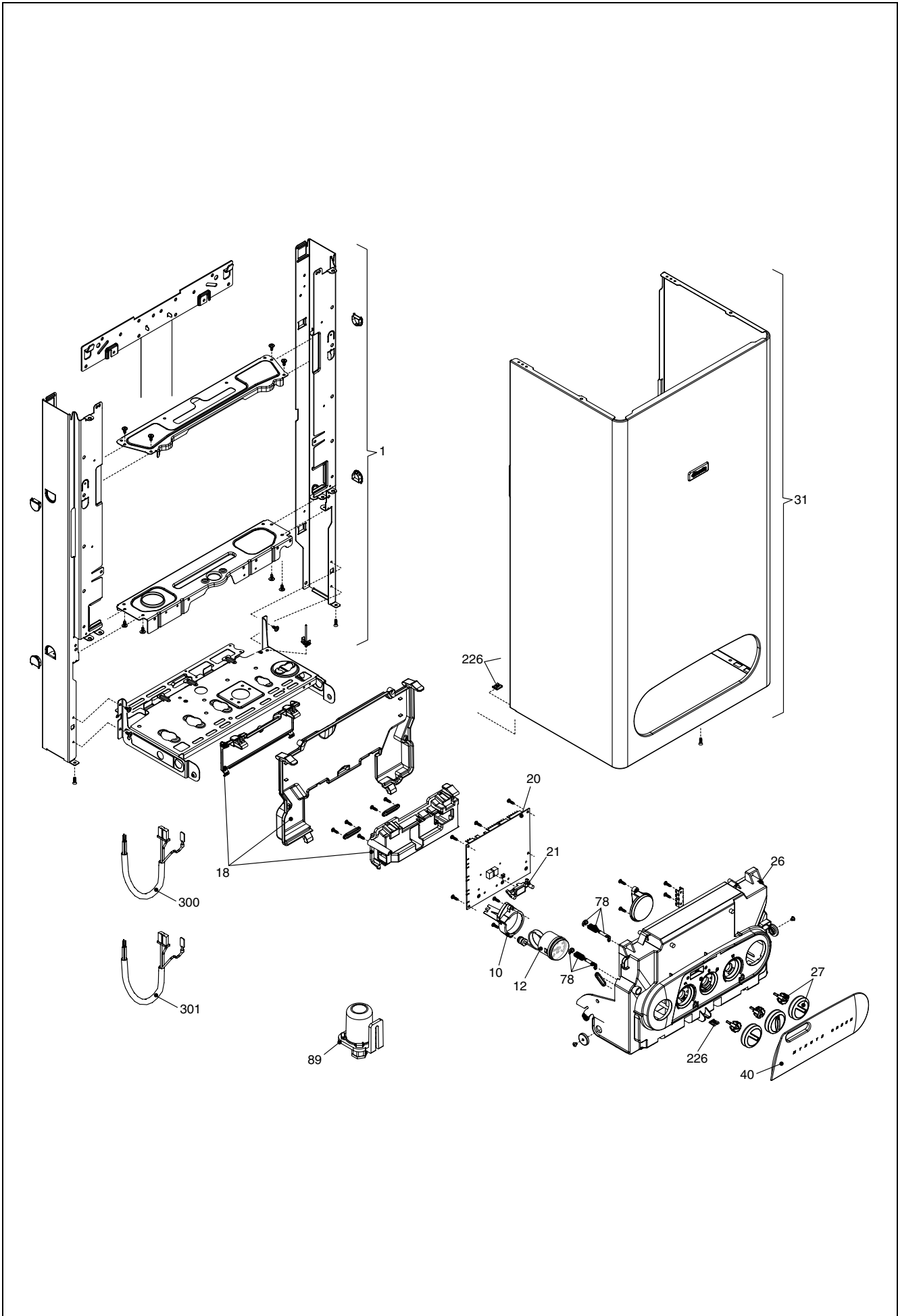


Wall hung boilers

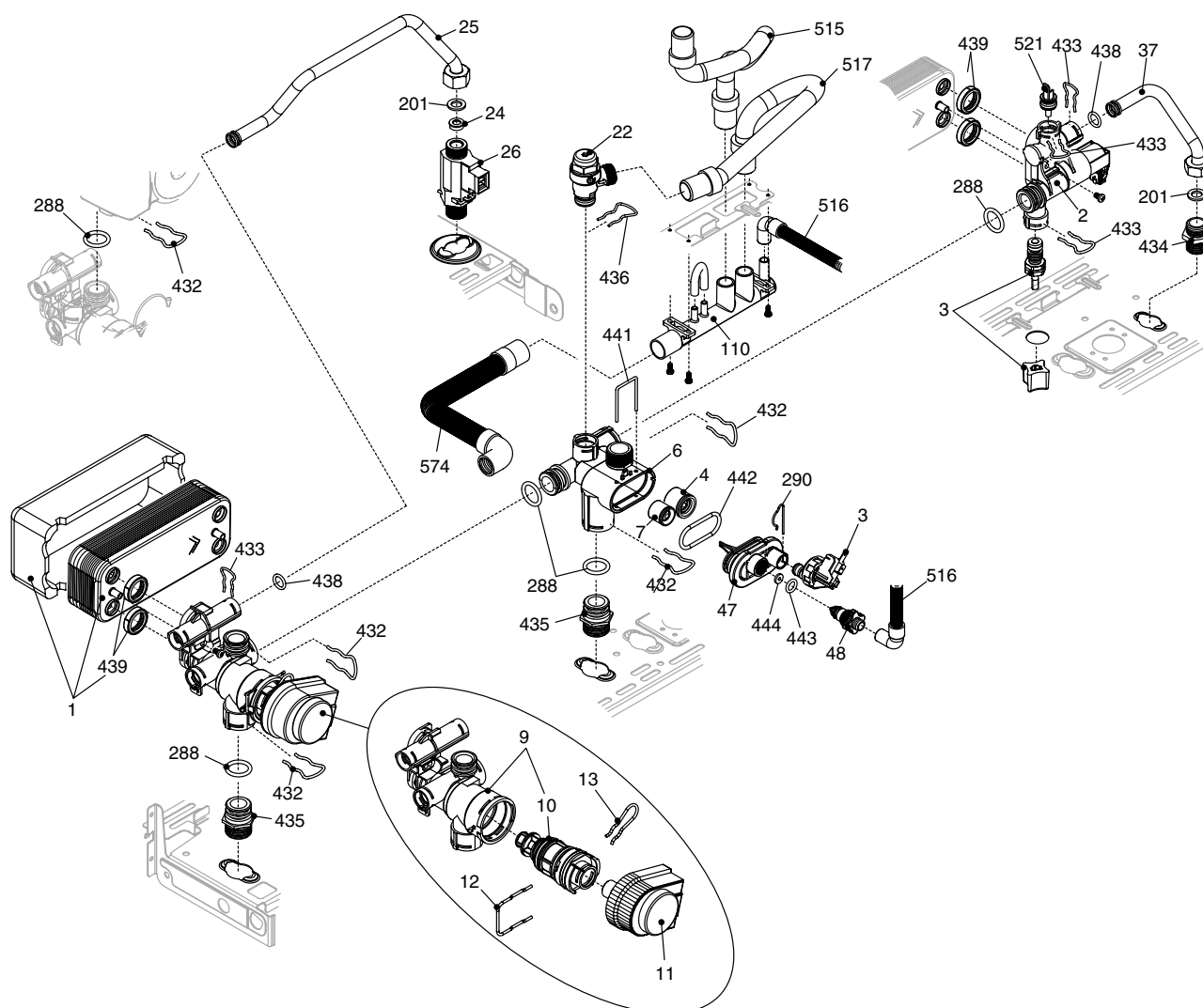
Mynute Green CSI



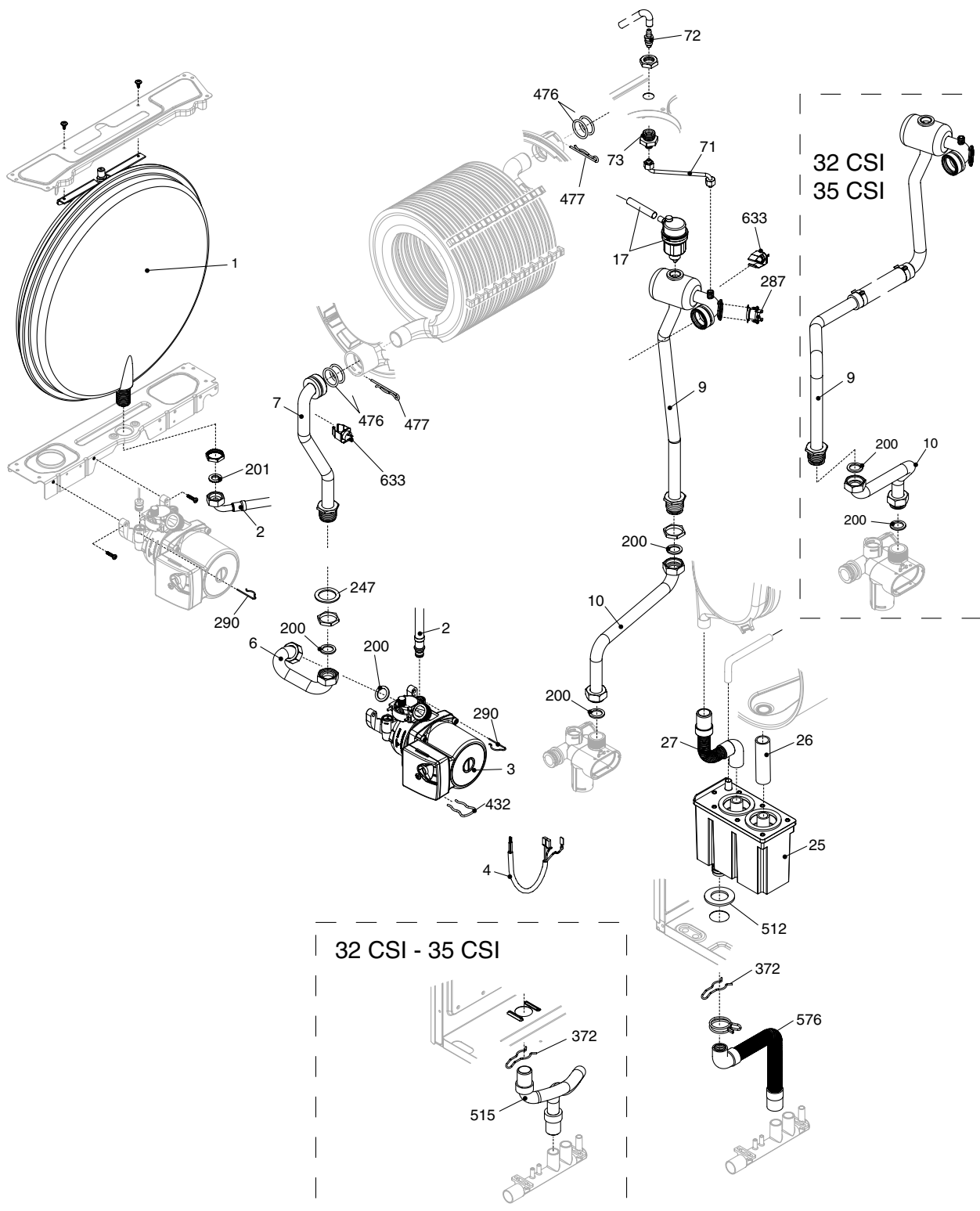
MODEL	PART NUMBER	
	MTN	GPL
Mynute Green 28 Csi	1150973 (C3C)	-
Mynute Green 32 Csi	1150983 (C4C)	-
Mynute Green 36 Csi	1150993 (C5C)	-



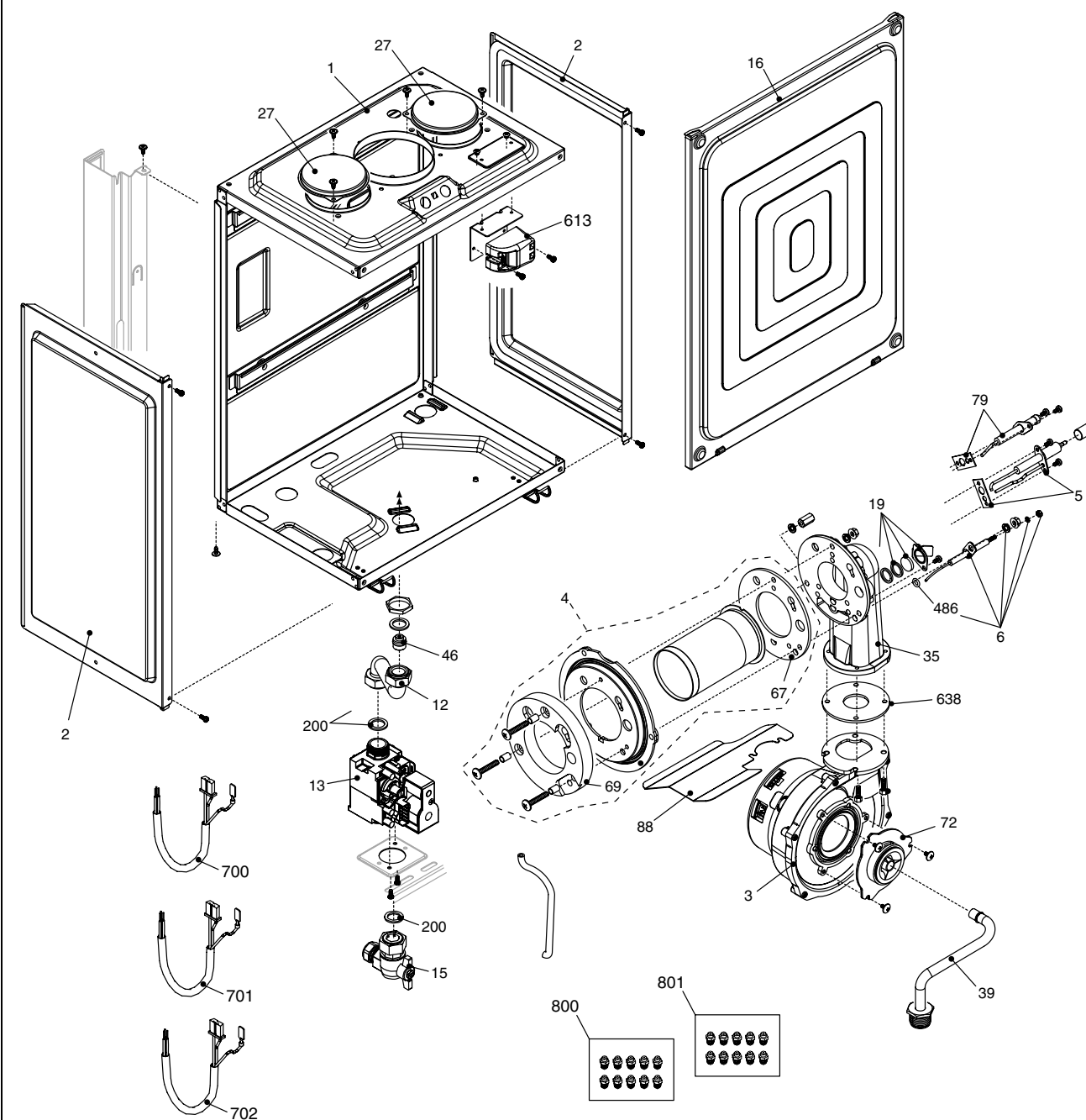
POS.	DESCRIPTION	28csi	32csi	36csi
1	Frame assembly	R01005403	R01005406	R01005406
10	Water gauge carrier	R10029105	R10029105	R10029105
12	Pressure gauge	R10029421	R10029421	R10029421
18	Cover assembly	R10028554	R10028554	R10028554
20	Printed circuit board	20008307	20008307	20008307
21	Led light guide	R10028557	R10028557	R10028557
26	Fixing flange	R10029459	R10029459	R10029459
27	Knob assembly	R10029152	R10029152	R10029152
31	Case Assembly	R01005485	R10029436	R10029436
40	Door panel	R10029439	R10029439	R10029439
78	Hinge	R01005442	R01005442	R01005442
89	Detector	R1582	R1582	R1582
226	Clip	R5128	R5128	R5128
300	Power wiring harness	R10028596	R10028596	R10028596
301	Wiring harness	R10028634	R10028634	R10028634



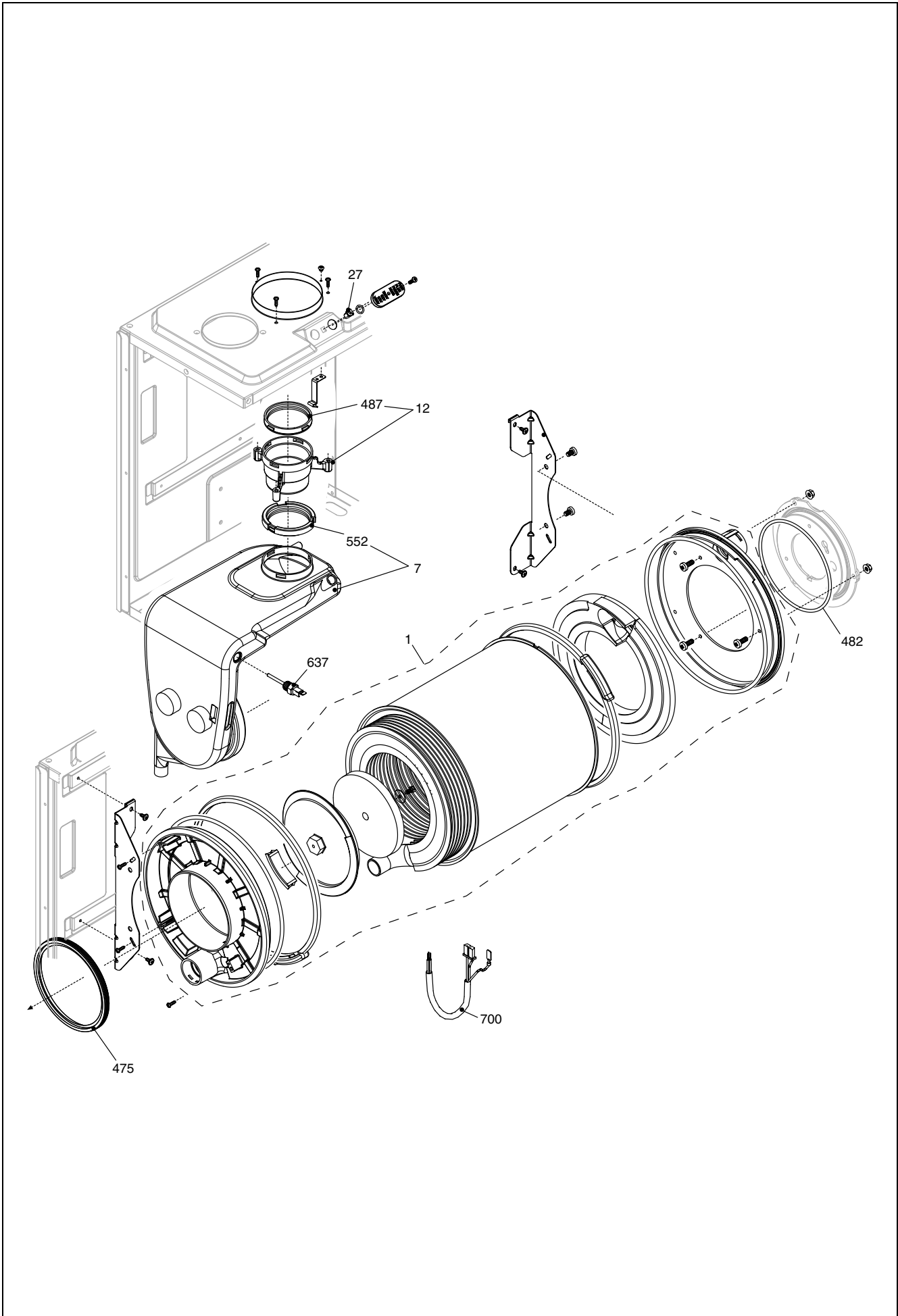
POS.	DESCRIPTION	28csi	32csi	36csi
1	Exchanger	R8037	R1957	R10024627
2	Fitting/union	R10026151	R10026151	R10026151
3	Pressure water switch	R10028141	R10028141	R10028141
4	Non return valve	R10025056	R10025056	R10025056
6	By-pass casing	R10024641	R10024641	R10024641
7	Heating by-pass valve	R1552	R1552	R1552
9	3-way heating manifold	R10026508	R10026508	R10026508
10	3 way valve cartridge	R10025305	R10025305	R10025305
11	Actuator	R10025304	R10025304	R10025304
12	Clip	R10025450	R10025450	R10025450
13	Clip	R10025449	R10025449	R10025449
20	Filling cock	R10025060	R10025060	R10025060
22	Safety valve	R10025055	R10025055	R10025055
24	Flow governor	R10025080	R10026046	R10026042
25	Pipe	R10025839	R10025839	R10025839
26	Dhw actuator	R10022348	R10022348	R10022348
37	Pipe	R10025840	R10025840	R10025840
47	Cover for by-pass assembly	R10024643	R10024643	R10024643
48	Cock	R10024646	R10024646	R10024646
110	Condensing collector	R10026555	R10026555	R10026555
201	Washer	R5026	R5026	R5026
288	Ring	R6898	R6898	R6898
290	Clip	R2165	R2165	R2165
432	Clip	R10024958	R10024958	R10024958
433	Clip	R10024986	R10024986	R10024986
434	Nipple	R10024985	R10024985	R10024985
435	Fitting/union	R10025059	R10025059	R10025059
436	Clip	R10025062	R10025062	R10025062
438	O ring	R10024988	R10024988	R10024988
439	Washer	R10025067	R10025067	R10025067
441	Clip	R10025063	R10025063	R10025063
442	O ring	R10025065	R10025065	R10025065
443	O ring	R10025064	R10025064	R10025064
444	Washer	R10025066	R10025066	R10025066
516	Flexible pipe	R10027040	R10027040	R10027040
521	NTC sensor	R10027351	R10027351	R10027351
522	Condensing pipe	R10026271	R10026271	R10026271
574	Flexible pipe	R10028539	R10028539	R10028539



POS.	DESCRIPTION	28csi	32csi	36csi
1	Expansion vessel	R2204	R2573	R2573
2	Pipe	R10025188	R10025188	R10025188
3	Pump	R10027258	R10027258	R10027258
4	Pump cable	R10028633	R10028633	R10028633
6	Pipe	R10028428	R10026264	R10026264
7	Pipe	R10026267	R10026267	R10026267
9	Pipe	R10029515	R10029457	R10029458
10	Pipe	R10028631	R10028643	R10028643
17	Air venting plug	R10029306	R10029306	R10029306
25	Siphon	R10028405	R10028405	R10028405
26	Flexible pipe	R10028540	R10027191	R10027191
27	Flexible pipe	R10027192	R10027192	R10027192
71	Pipe	R10028430	R10028516	R10028515
72	Drain tap	R01005137	R01005137	R01005137
73	Cock	R10028431	R10028431	R10028431
200	Washer	R5023	R5023	R5023
201	Washer	R5026	R5026	R5026
247	Washer	R5203	R5203	R5203
287	High limit thermostat	R2258	R2258	R2258
290	Clip	R2165	R2165	R2165
372	Clip	R2588	R2588	R2588
476	O ring	R10026324	R10026324	R10026324
477	Split pin	R10026269	R10026269	R10026269
512	Washer	R10027193	R10027193	R10027193
515	Flexible pipe	-	R10027074	R10027074
576	Flexible pipe	R10029527	-	-
633	NTC sensor	20003819	20003819	20003819



POS.	DESCRIPTION	28csi	32csi	36csi
1	Roomsealed chamber	R10028341	R10028447	R10028447
2	Roomsealed chamber side	R10026231	R10026231	R10026231
3	Fan	R10028456	R10028456	R10028456
4	Burner assembly	R10028537	R10028642	R10028537
5	Spark / ignition electrode	R10027864	R10027864	R10027864
6	Condense electrode	R10026316	R10026316	R10026316
12	Gas pipe	R10028620	R10026318	R10026318
13	Gas valve	R10029097	R10029097	R10029097
15	3/4" gas cock	R2266	R2266	R2266
16	Combustion chamber cover	R10028345	R10026230	R10026230
19	Glass stopper assembly	R10026328	R10026328	R10026328
27	Plug	R10023805	R10023805	R10023805
35	Air gas conveyor	R10028420	R10028420	R10028420
39	Pipe	R10030381	R10029561	R10028206
46	Gas diaphragm 6,7	R10027161	R10027161	R10027162
67	Washer Ø 62	R10026322	R10026322	R10026322
69	Tryton	R10028425	R10028425	R10028425
72	Mixer	R10024295	R10024295	R10024295
79	Flame detection electrode	R10028422	R10028422	R10028422
88	Fan protection	20006411	20006411	20006411
200	Washer	R5023	R5023	R5023
486	O ring	R10026325	R10026325	R10026325
613	Ignition module	20002969	20002969	20002969
638	Washer	20007058	20008313	20007054
700	Spark electrode cable	R10026558	R10026558	R10026558
701	Gas valve cable	R10028599	R10028599	R10028599
702	Wiring harness	20001560	20001681	20001681
800	Ng conversion kit	R01005465	R01005465	R01005466
801	LPG conversion kit	R01005447	R01005447	R01005448



POS.	DESCRIPTION	28csi	32csi	36csi
1	Condensing exchanger assembly	20007914	20007915	20007916
7	Conveyor	20008306	20007053	20007053
12	Flue drain connection	R10028421	R10028421	R10028421
27	Screw	R10020625	R10020625	R10020625
475	Washer Ø 125	R10026323	R10026323	R10026323
482	Washer	R10026366	R10026366	R10026366
487	Washer Ø 60	R10026345	R10026345	R10026345
552	Washer Ø 60	R10028426	R10028426	R10028426
637	Sensor	20007050	20007050	20007050
700	Combustion cable	20008346	20008346	20008346

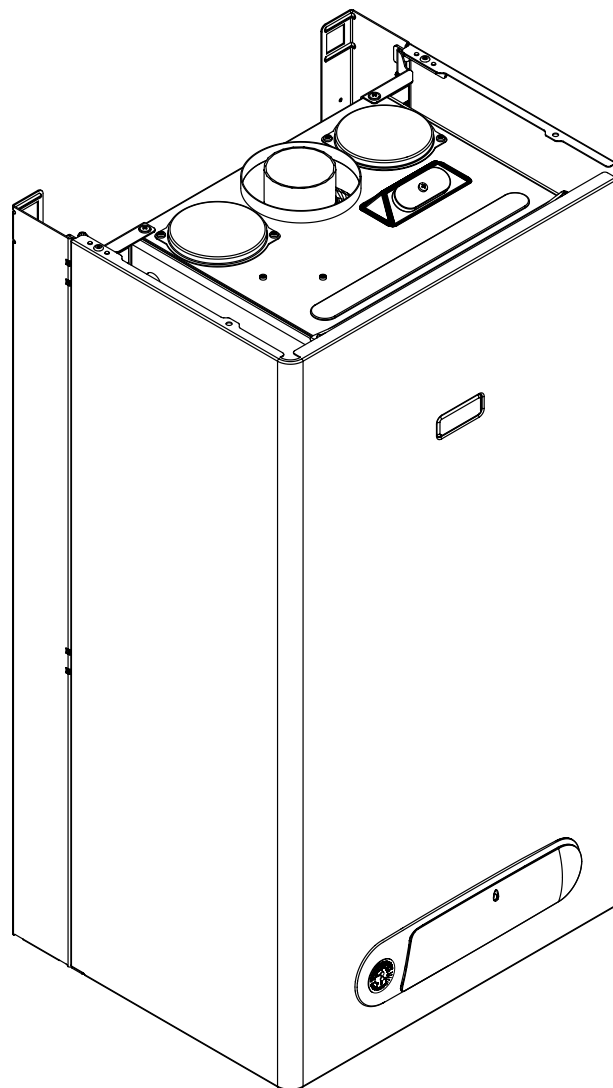
Rev.	data	Descrizione
1.0	20/01/08	Modifiche varie
2.0	19/02/08	E00120070221 : Scheda
3.0	02/04/08	Tolto dalla pubblicazione le caldaie 11550943, 1150953, 1150963 inserite in E343 E00120080089 : Temostato fumi, termostato limite, trasformatore
4.0	01/09/08	E00120080230 : sonda a contatto – E00120080238 : disegno sonda temp esterna E00120080317 : protezione ventilatore
5.0	27/01/09	E00120080522 : cablaggio, sonda temperatura, scambiatore condensante, Convogliatore, scheda gestione, guarnizione ventilatore E00120080360 : coibente scambiatore



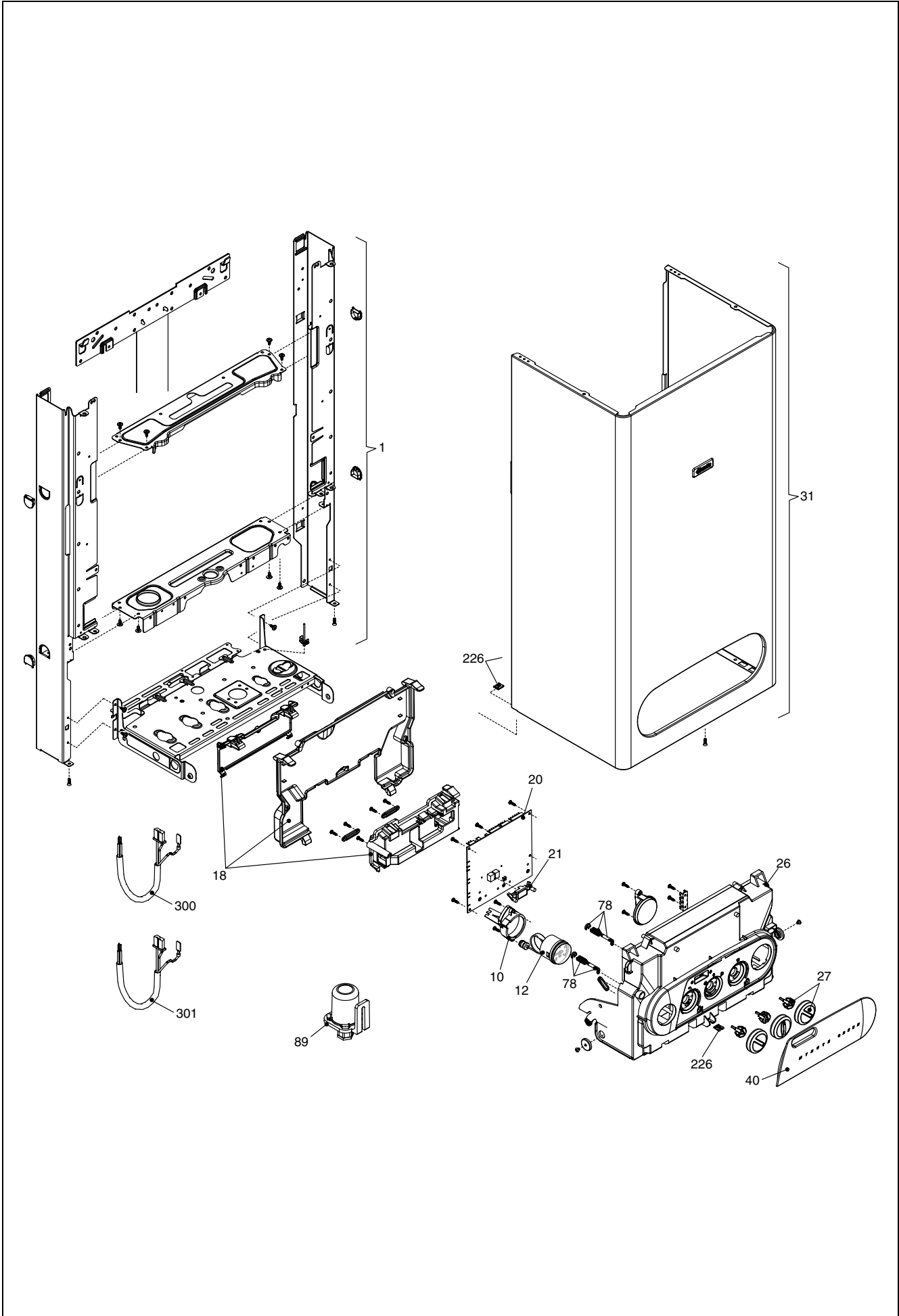
Beretta reserve the right to change the specifications without prior notice.
Consumers' statutory rights are not affected.

Wall hung boilers

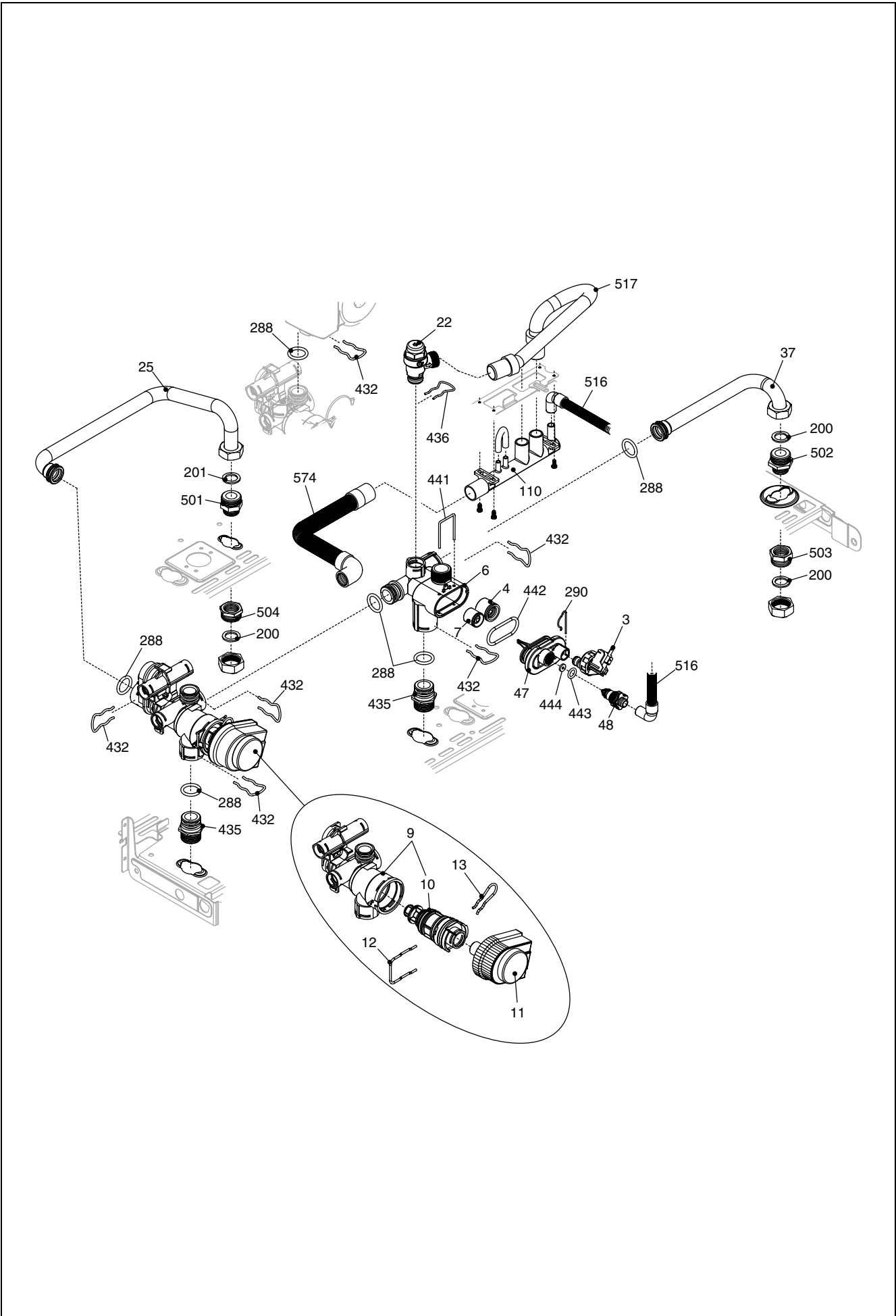
Mynute Green RSI



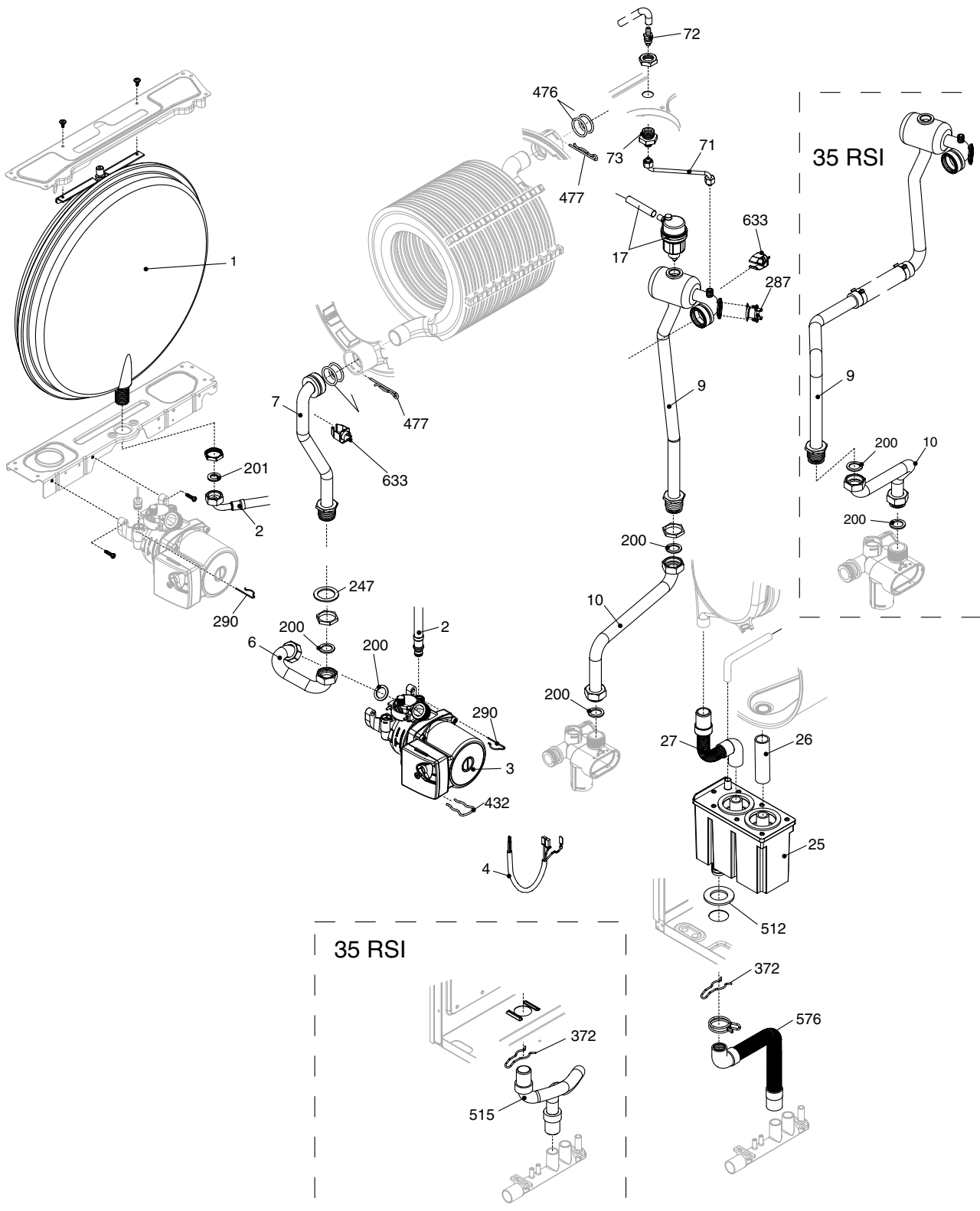
MODEL	PART NUMBER	
	MTN	GPL
Mynute Green 12 Rsi	20002203 (D8V)	-
Mynute Green 15 Rsi	1150943 (B3X)	-
Mynute Green 25 Rsi	1150953 (C1C)	-
Mynute Green 35 Rsi	1150963 (C2C)	-



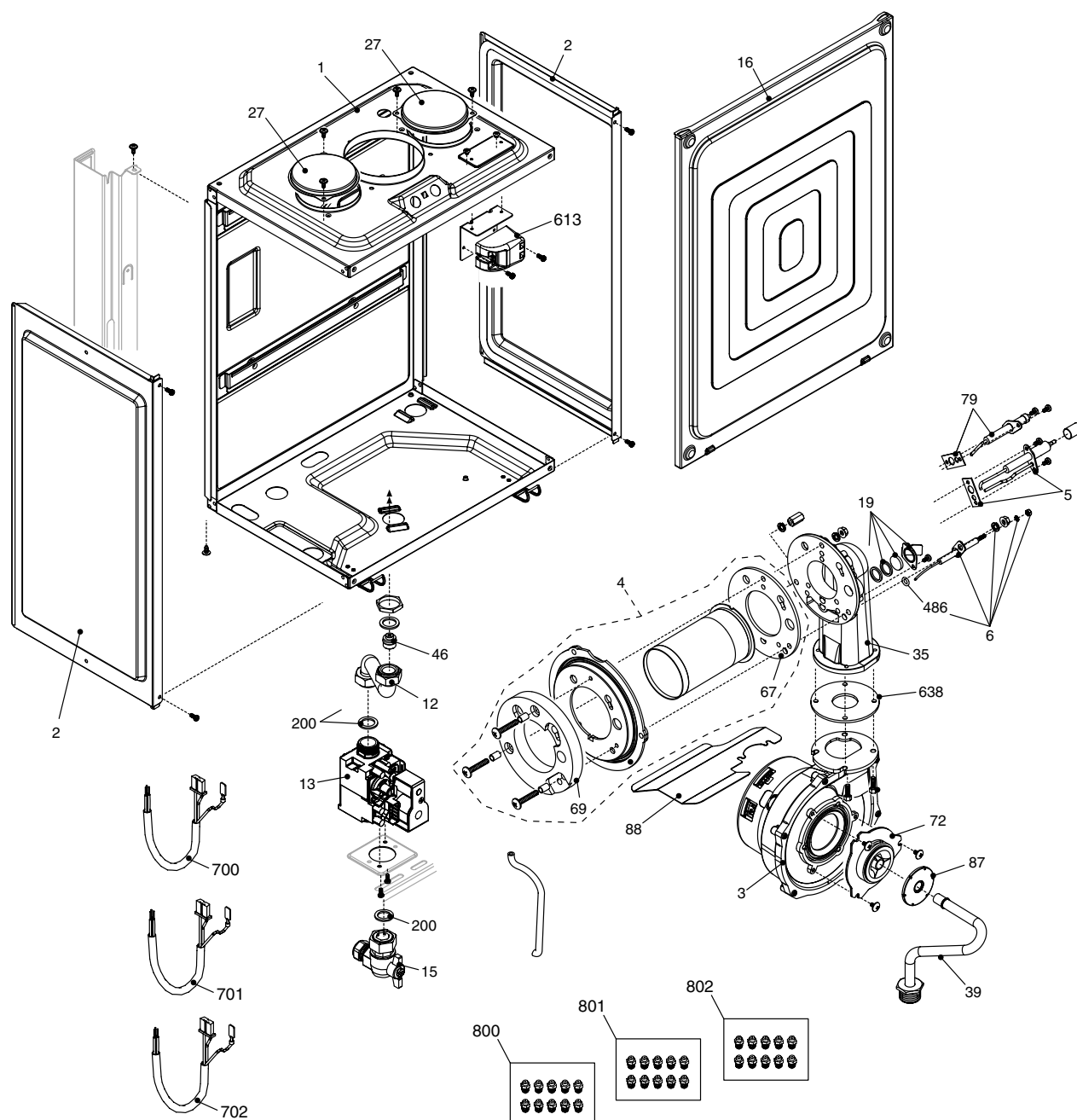
POS.	DESCRIPTION	12rsi	15 rsi	25rsi	35rsi
1	Frame assembly	R01005403	R01005403	R01005403	R01005406
10	Water gauge carrier	R10029105	R10029105	R10029105	R10029105
12	Pressure gauge	R10029421	R10029421	R10029421	R10029421
18	Cover assembly	R10028554	R10028554	R10028554	R10028554
20	Printed circuit board	20008307	20008307	20008307	20008307
21	Led light guide	R10028557	R10028557	R10028557	R10028557
26	Instrumental panel	R10029948	R10029948	R10029948	R10029948
27	Knob assembly	R10029152	R10029152	R10029152	R10029152
31	Case Assembly	R01005485	R01005485	R01005485	R10029436
40	Door panel	R10029439	R10029439	R10029439	R10029439
78	Hinge assembly	R01005442	R01005442	R01005442	R01005442
89	Detector	R1582	R1582	R1582	R1582
226	Clip	R5128	R5128	R5128	R5128
300	Power wiring harness	R10028596	R10028596	R10028596	R10028596
301	Terminal blok low voltage Wiring harness	R10029769	R10029769	R10029769	R10029769



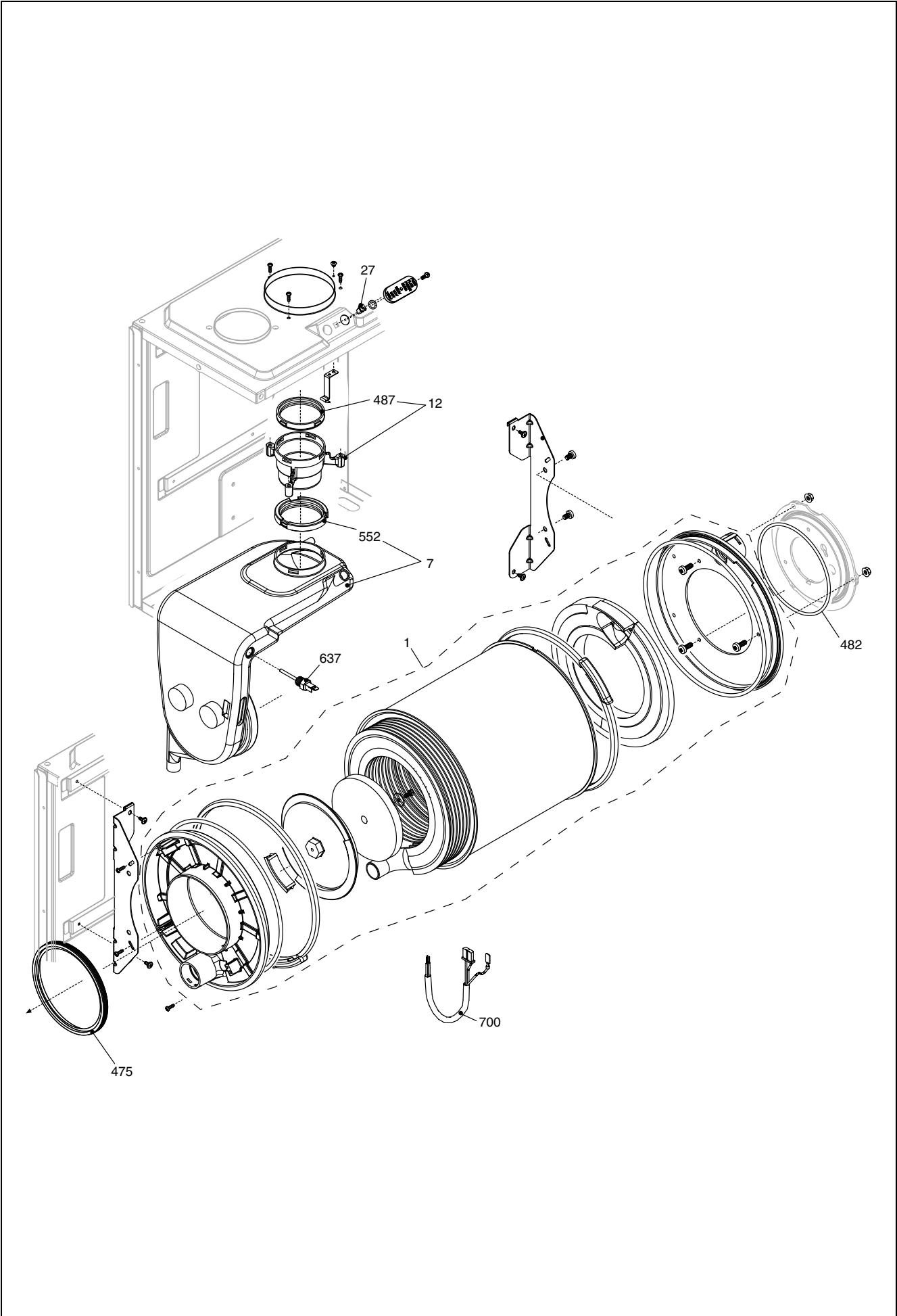
POS.	DESCRIPTION	12rsi	15 rsi	25rsi	35rsi
3	Pressure water switch	R10028141	R10028141	R10028141	R10028141
4	Non return valve	R10025056	R10025056	R10025056	R10025056
6	By-pass casing	R10024641	R10024641	R10024641	R10024641
7	Heating by-pass valve	R2047	R2047	R1552	R1552
9	3-way heating manifold and cartridge	R10027343	R10027343	R10027343	R10027343
10	3 way valve cartridge	R10025305	R10025305	R10025305	R10025305
11	Actuator	R10025304	R10025304	R10025304	R10025304
12	Clip	R10025450	R10025450	R10025450	R10025450
13	Clip	R10025449	R10025449	R10025449	R10025449
22	Safety valve	R10025055	R10025055	R10025055	R10025055
25	Pipe	R10026714	R10026714	R10026714	R10026714
37	Pipe	R10026713	R10026713	R10026713	R10026713
47	Cover for by-pass assembly	R10024643	R10024643	R10024643	R10024643
48	Cock	R10024646	R10024646	R10024646	R10024646
110	Condensing collector	R10026555	R10026555	R10026555	R10026555
200	Washer	R5023	R5023	R5023	R5023
288	Ring	R6898	R6898	R6898	R6898
290	Clip	R2165	R2165	R2165	R2165
432	Clip	R10024958	R10024958	R10024958	R10024958
435	Fitting/union	R10025059	R10025059	R10025059	R10025059
436	Clip	R10025062	R10025062	R10025062	R10025062
441	Clip	R10025063	R10025063	R10025063	R10025063
442	O ring	R10025065	R10025065	R10025065	R10025065
443	O ring	R10025064	R10025064	R10025064	R10025064
444	Washer	R10025066	R10025066	R10025066	R10025066
501	Nipple	R10026914	R10026914	R10026914	R10026914
502	Nipple	R10026915	R10026915	R10026915	R10026915
503	Fitting/union	R10026917	R10026917	R10026917	R10026917
504	Fitting/union	R10026916	R10026916	R10026916	R10026916
516	Flexible pipe	R10027040	R10027040	R10027040	R10027040
522	Condensing pipe	R10026271	R10026271	R10026271	R10026271
574	Flexible pipe	R10028539	R10028539	R10028539	R10028539



POS.	DESCRIPTION	12rsi	15 rsi	25rsi	35rsi
1	Expansion vessel	R2204	R2204	R2204	R2573
2	Pipe	R10025188	R10025188	R10025188	R10025188
3	Pump	R10027571	R10027571	R10027258	R10027258
4	Pump cable	R10028633	R10028633	R10028633	R10028633
6	Pipe	R10028428	R10028428	R10028428	R10026264
7	Pipe	R10026267	R10026267	R10026267	R10026267
9	Pipe	20002988	R10029515	R10029515	R10029458
10	Pipe	R10028631	R10028631	R10028631	R10028643
17	Air venting plug	R10029306	R10029306	R10029306	R10029306
25	Siphon	R10028405	R10028405	R10028405	R10028405
26	Flexible pipe	R10028540	R10028540	R10028540	R10027191
27	Flexible pipe	R10027192	R10027192	R10027192	R10027192
71	Pipe	R10028430	R10028430	R10028430	R10028515
72	Drain tap	R01005137	R01005137	R01005137	R01005137
73	Cock	R10028431	R10028431	R10028431	R10028431
200	Washer	R5023	R5023	R5023	R5023
201	Washer	R5026	R5026	R5026	R5026
247	Washer	R5203	R5203	R5203	R5203
287	High limit thermostat	R2258	R2258	R2258	R2258
290	Clip	R2165	R2165	R2165	R2165
372	Clip	R2588	R2588	R2588	R2588
476	O ring	R10026324	R10026324	R10026324	R10026324
477	Split pin	R10026269	R10026269	R10026269	R10026269
512	Washer	R10027193	R10027193	R10027193	R10027193
515	Flexible pipe	-	-	-	R10027074
576	Flexible pipe	R10029527	R10029527	R10029527	-
633	NTC sensor	20003819	20003819	20003819	20003819



POS.	DESCRIPTION	12rsi	15 rsi	25rsi	35rsi
1	Roomsealed chamber	R10028341	R10028341	R10028341	R10028447
2	Roomsealed chamber side	R10026231	R10026231	R10026231	R10026231
3	Fan	20002995	R10028456	R10028456	R10028456
4	Burner assembly	20000148	R10028537	R10028537	R10028537
5	Spark / ignition electrode	R10027864	R10027864	R10027864	R10027864
6	Condense electrode	R10026316	R10026316	R10026316	R10026316
12	Gas pipe	R10028620	R10028620	R10028620	R10026318
13	Gas valve	R10029097	R10029097	R10029097	R10029097
15	3/4" gas cock	R2266	R2266	R2266	R2266
16	Combustion chamber cover	R10028345	R10028345	R10028345	R10026230
19	Glass stopper assembly	R10026328	R10026328	R10026328	R10026328
27	Plug	R10023805	R10023805	R10023805	R10023805
35	Air gas conveyor	R10028420	R10028420	R10028420	R10028420
39	Pipe	20002997	R10030381	R10030381	R10028206
46	Gas diaphragm 6,7	R10027159	R10020265	R10027161	R10027162
67	Washer Ø 62	R10026322	R10026322	R10026322	R10026322
69	Tryton	R10028425	R10028425	R10028425	R10028425
72	Mixer	R10027919	R10027408	R10024295	R10024295
79	Flame detection electrode	R10028422	R10028422	R10028422	R10028422
87	Plug	20002998	-	-	-
88	Fan protection	20006411	20006411	20006411	20006411
200	Washer	R5023	R5023	R5023	R5023
486	O ring	R10026325	R10026325	R10026325	R10026325
613	Kit transformer + cable	20001563	20002969	20002969	20002969
638	Washer	20010335	20007058	20007058	20007054
700	Spark electrode cable	R10026558	R10026558	R10026558	R10026558
701	Gas valve cable	R10028599	R10028599	R10028599	R10028599
702	Ignition cable	20003018	20001560	20001560	20001681
800	Ng conversion kit	20003108	R01005467	R01005465	R01005466
801	LPG conversion kit	20003109	R01005446	R01005447	R01005448
802	G25.1 conversion kit	20003110	-	-	-



POS.	DESCRIPTION	12rsi	15 rsi	25rsi	35rsi
1	Condensing exchanger assembly	20007912	20007914	20007914	20007916
7	Conveyor	20008306	20008306	20008306	20007053
12	Flue drain connection	R10028421	R10028421	R10028421	R10028421
27	Nut screw	R10020625	R10020625	R10020625	R10020625
475	Washer Ø 125	R10026323	R10026323	R10026323	R10026323
482	Washer	R10026366	R10026366	R10026366	R10026366
487	Washer Ø 60	R10026345	R10026345	R10026345	R10026345
552	Washer Ø 60	R10028426	R10028426	R10028426	R10028426
637	Sensor	20007050	20007050	20007050	20007050
700	Combustion cable	20008308	20008308	20008308	20008308

Rev.	data	Descrizione
1.0	20/01/08	Modifiche varie
2.0	19/02/08	E00120070221 : Scheda
3.0	02/04/08	Tolto dalla pubblicazione E261 le caldaie 11550943, 1150953, 1150963 Questa pubblicazione mantiene la revisione della pubblicazione E261 E00120080089 : Temostato fumi, termostato limite, trasformatore
4.0	02/09/08	E00120080230 : sonda a contatto – E0012008 : protezione ventilatore E00120080238 : disegno sonda temperatura esterna
5.0	27/01/09	E00120080522 : cablaggio, sonda temperatura, scambiatore condensante, Convogliatore, scheda gestione, guarnizione ventilatore E00120080500 : bruciatore (solo modello 12 rsi)



Beretta reserve the right to change the specifications without prior notice.
Consumers' statutory rights are not affected.