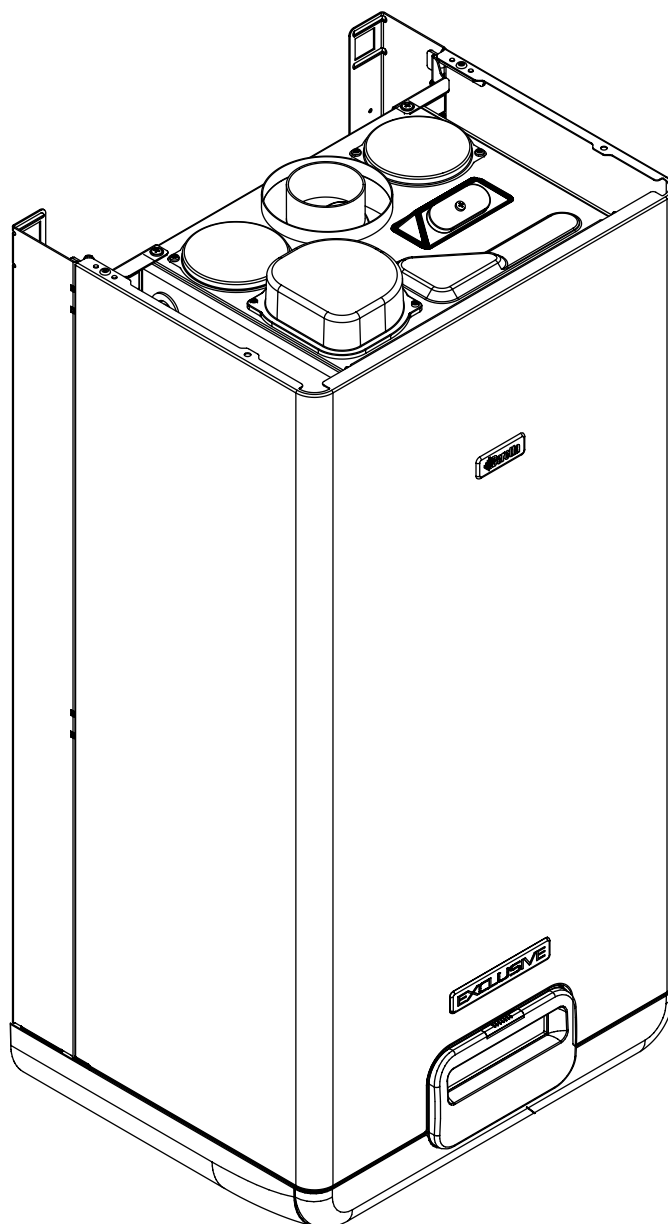
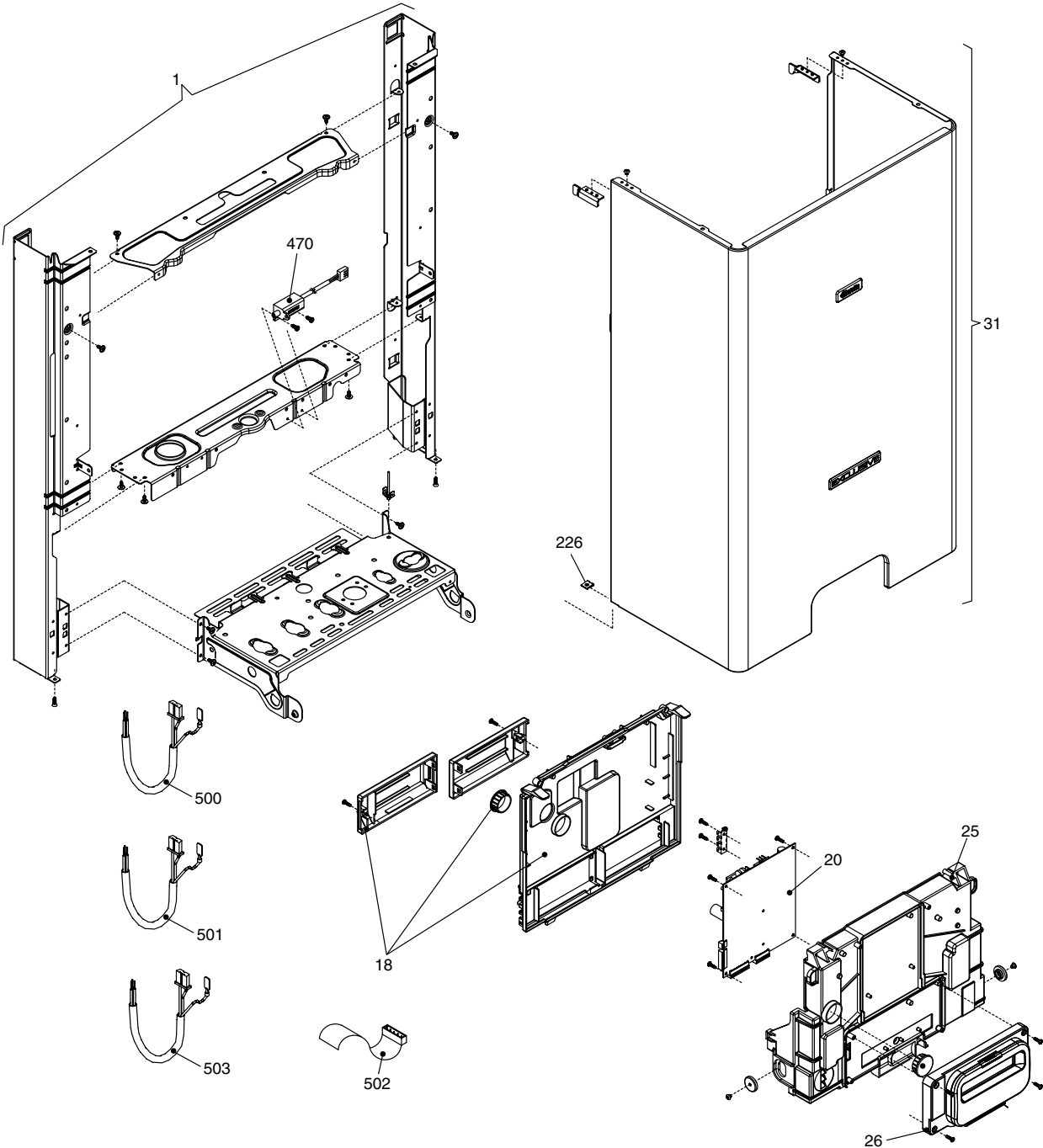


Wall hung boilers

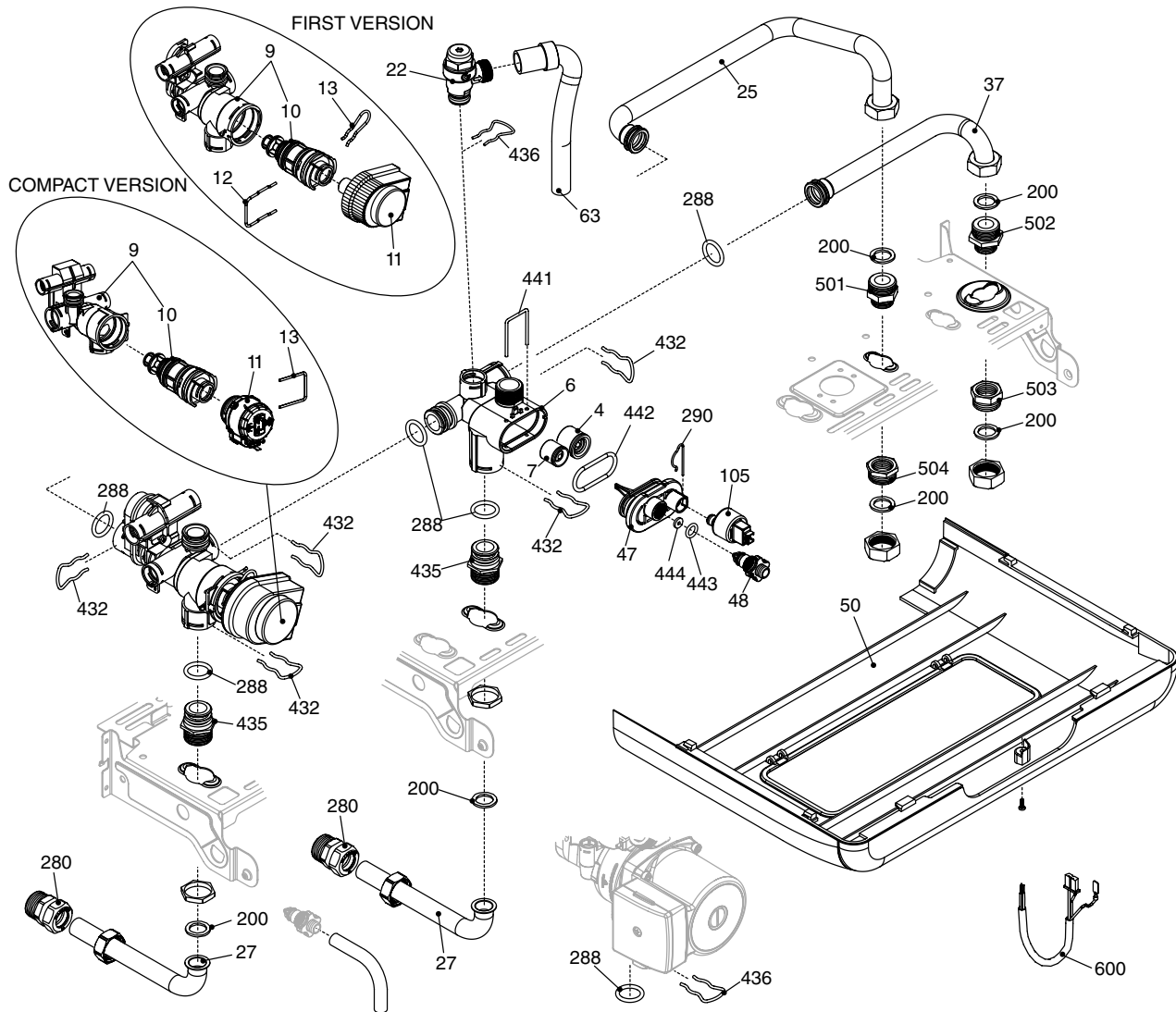
Exclusive Mix RSI



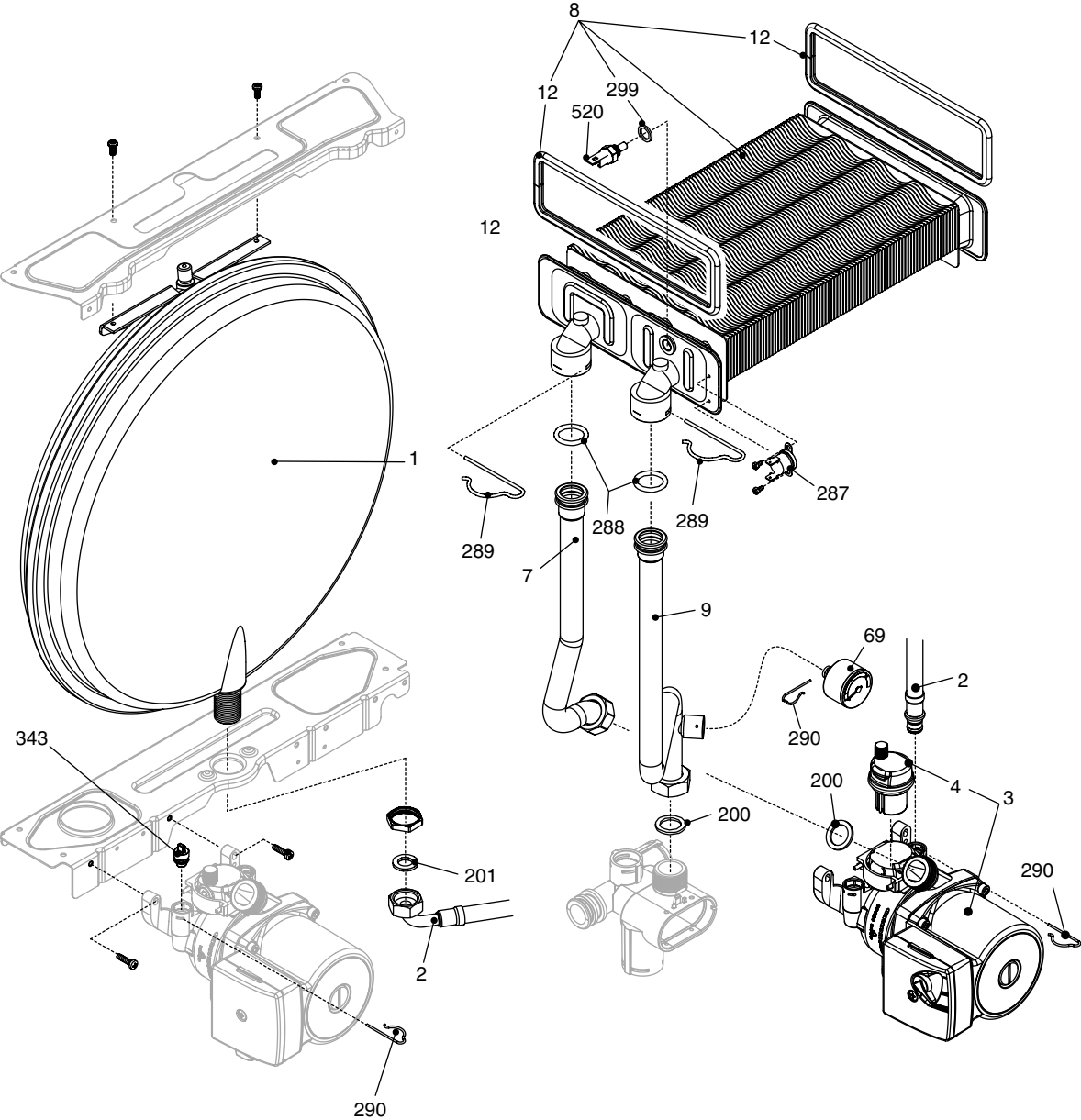
MODEL	PART NUMBER	
	MTN	GPL
Exclusive Mix 30 Rsi	1150353 (A5G)	-



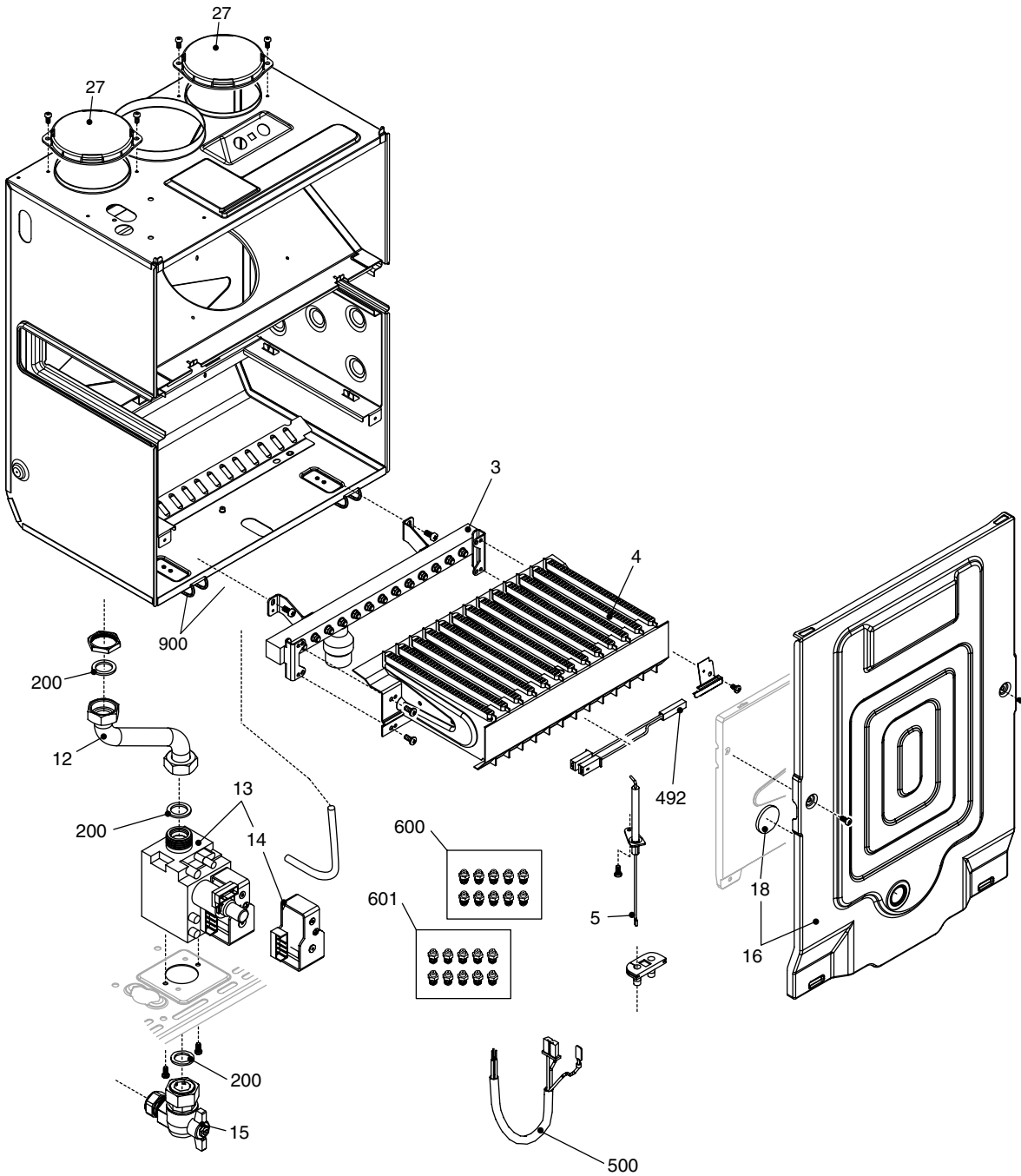
POS.	DESCRIPTION	30 Rsi
1	Frame assembly	R01005361
18	Cover	R10025843
20	Printed circuit board AB01B	R10029772
25	Cover	R10025842
26	Control panel	R10027677
31	Case	R10026113
226	Clip	R5128
470	Ignition transformer TR6	R10026031
500	Current supply wiring harness	R10025869
501	Low tension cable	R10026715
502	Electric connection band	R10025873
503	Terminal blok low voltage Wiring harness	R10029959



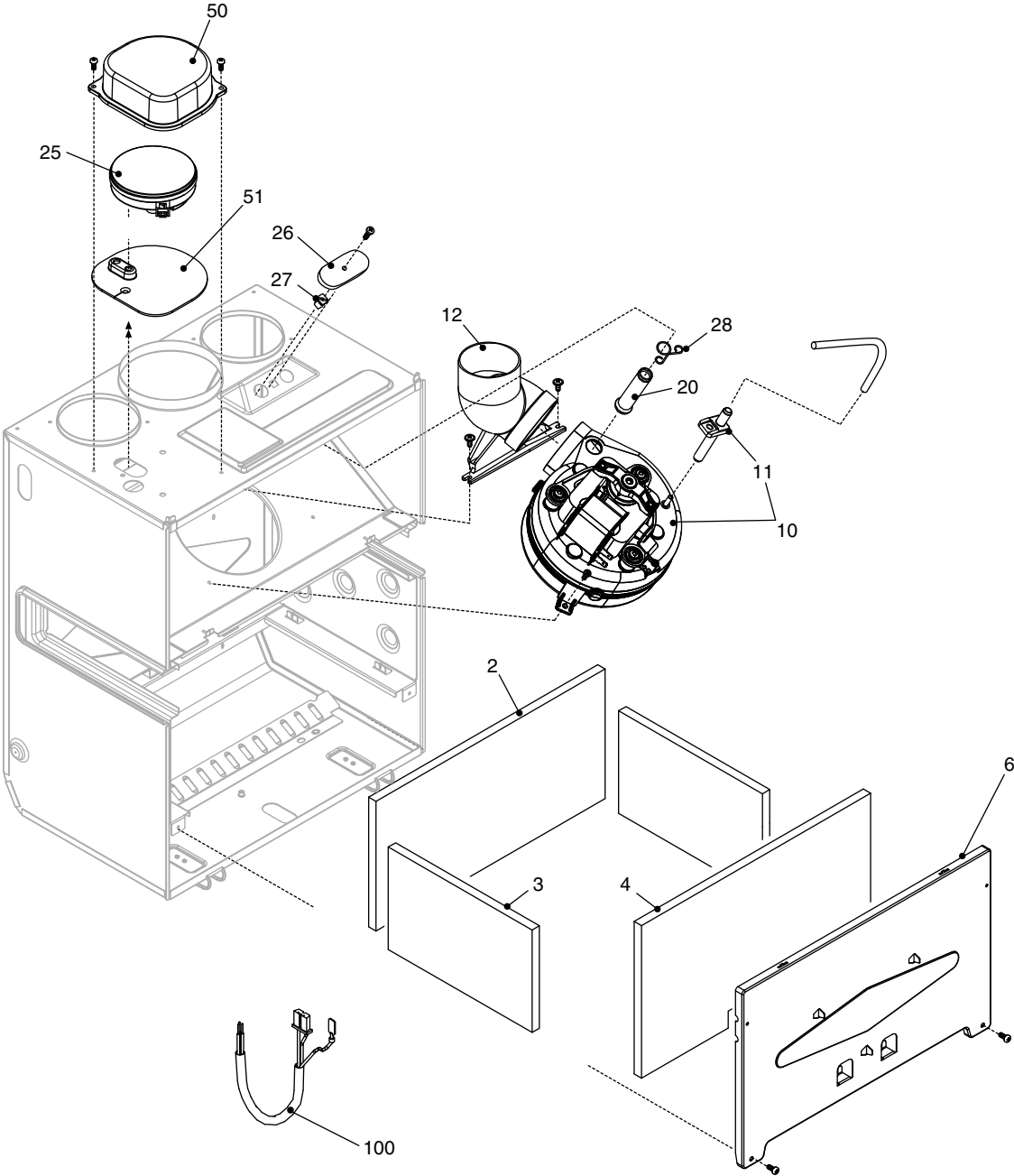
POS.	DESCRIPTION	30 Rsi
4	Non return valve	R10025056
6	By-pass casing	R10024641
7	By-pass valve	R2047
9	3-way heating manifold and cartridge (First version)	R10027343
9	Valve with cartridge (Compact version)	20024204
10	3 way valve cartridge (First version)	R10025305
10	3 way valve cartridge (Compact version)	20043594
11	Actuator (First version)	R10025304
11	Actuator (Compact version)	20017594
12	Clip	R10025450
13	Clip (First version)	R10025449
13	Clip (Compact version)	20017598
22	Safety valve	20043820
25	Pipe	R10026714
27	Pipe	R10024961
37	Pipe	R10026713
47	Cover for by-pass assembly	R10024643
48	Cock	R10024646
50	Cover	R10027685
63	Pipe	R10025058
105	Pressure transducer	R10028142
200	Washer	R5023
280	Connection	R10025090
288	Ring	R6898
290	Clip	R2165
432	Clip	R10024958
435	Fitting/union	R10025059
436	Clip	R10025062
441	Clip	R10025063
442	O ring	R10025065
443	O ring	R10025064
444	Washer	R10025066
501	Nipple	R10026914
502	Nipple	R10026915
503	Fitting/union	R10026917
504	Fitting/union	R10026916
600	Control cable (First version)	R10026862
600	Control cable (Compact version)	20045533



POS.	DESCRIPTION	30 Rsi
1	Expansion vessel	R2204
2	Pipe	R10025188
3	Pump	R10027571
4	Air vent bottle	R10025485
7	Pipe	R10026357
8	Exchanger	20004774
9	Pipe	R10027138
12	Washer	R2226
69	Pressure gauge	R10027135
200	Washer	R5023
201	Washer	R5026
287	High limit	R2258
288	Ring	R6898
289	Clip	R2223
290	Clip	R2165
299	Washer	R10022726
343	Pump plug	R2216
520	NTC-sensor	20004832



POS.	DESCRIPTION	30 Rsi
3	Main burner injector manifold	R10026350
4	Burner	R10026349
5	Spark / ignition electrode	R10025985
12	Gas pipe	R10026140
13	Gas valve	20007784
14	Gas valve solenoid	20040675
15	3/4" gas cock	R2266
16	Cover assembly	R10023928
18	Glass	R10021558
27	Hole cover	20005586
200	Washer	R5023
492	Thermostat	R10026721
500	Gas valve cable	R10025872
600	G20 conversion kit	20019506
601	Lpg conversion kit	20019508
900	Air box clip	20061168



POS.	DESCRIPTION	30 Rsi
2	Back insulatin panel	R10023909
3	Combustion chamber insulation panel	R2231
4	Combustion chamber insulation panel	R10023910
6	Combustion chamber cover	R10026355
10	Fan	R10027217
11	Pressure tube	R10021726
12	Fan connection	R10021972
20	Fumes testing connection pipe	R10021973
25	Pressure differential switch	R2677
26	Plug	R10020624
27	Nut screw	R10020625
28	Clip	R10020626
50	Pressure diff.switch cover	R10025835
51	Washer	R10025836
100	Combustion cable	R10025868

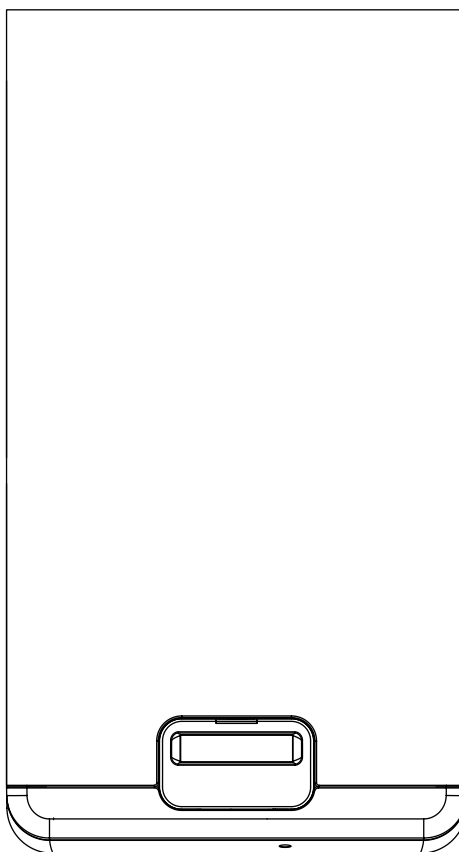
Rev.	data	Descrizione
1.0	15/02/06	Inserito modello 30 CSI e Modifiche varie
2.0	23/03/06	Modifiche varie
3.0	08/11/06	Modifiche varie
4.0	28/09/07	Modifiche varie
5.0	25/11/08	E00120080282 : scambiatore
6.0	04/07/09	Modifiche varie
7.0	19/11/09	E00120090613 : tappo scatola aria – Aggiunte trasformazioni
8.0	07/07/11	E00120100019 : molletta circolatore Inserito degasatore del circolatore E00120110317 : nuova bobina valvola gas
9.0	21/11/2011	E00120110639 : valvola 3 vie, valvola di non ritorno La caldaia 1150353 è stata tolta dalla pubblicazione E152
10.0	26/06/2013	E00120120115 : valvola gas – E00120120141 : presa pressione ventilatore Aggiunto coperchio camera combustione – Aggiunte clip scatola aria Corretto disegno scatola aria – E00120110494 : Valvola di sicurezza



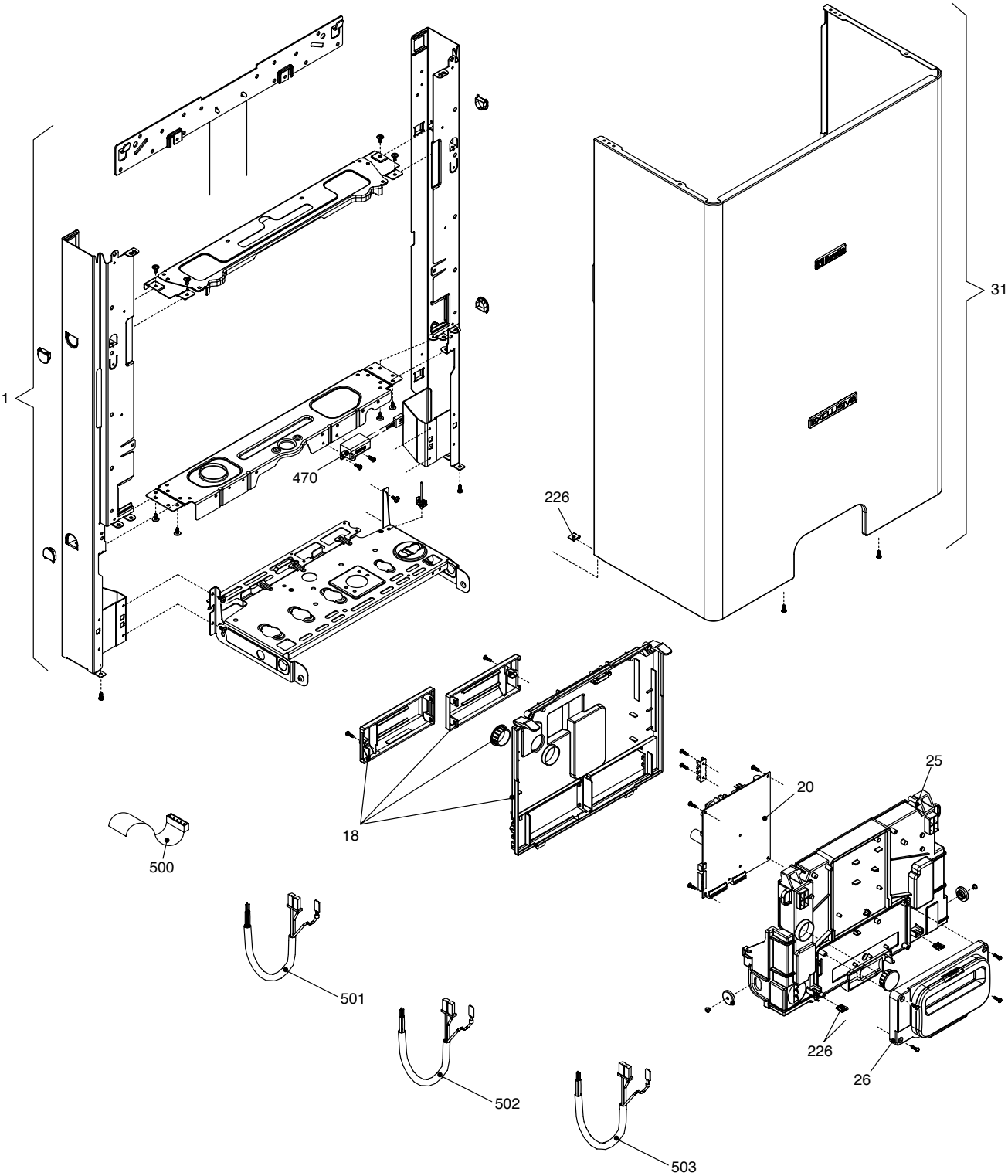
Beretta reserve the right to change the specifications without prior notice.
Consumers' statutory rights are not affected.

Wall hung boilers

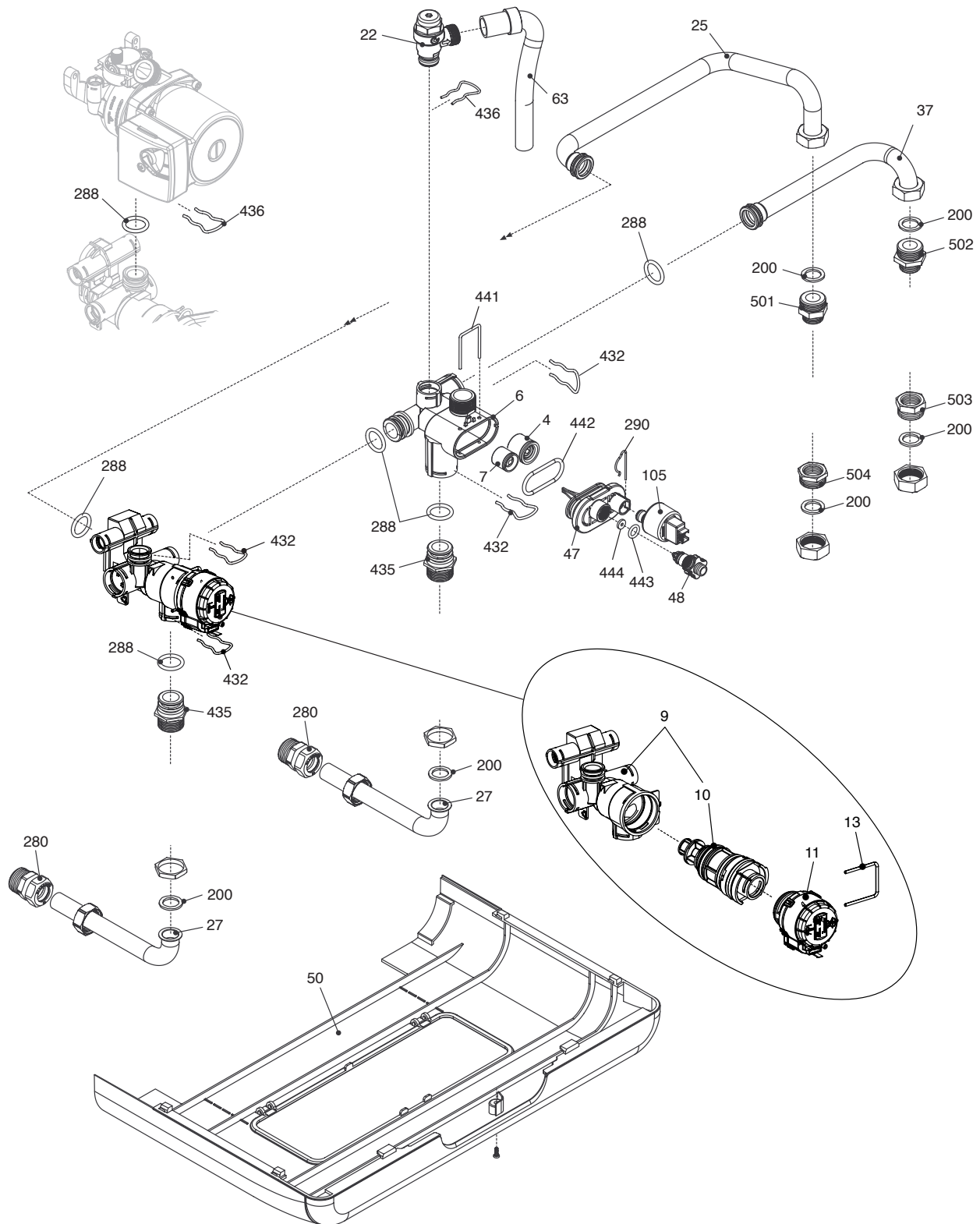
Exclusive Mix



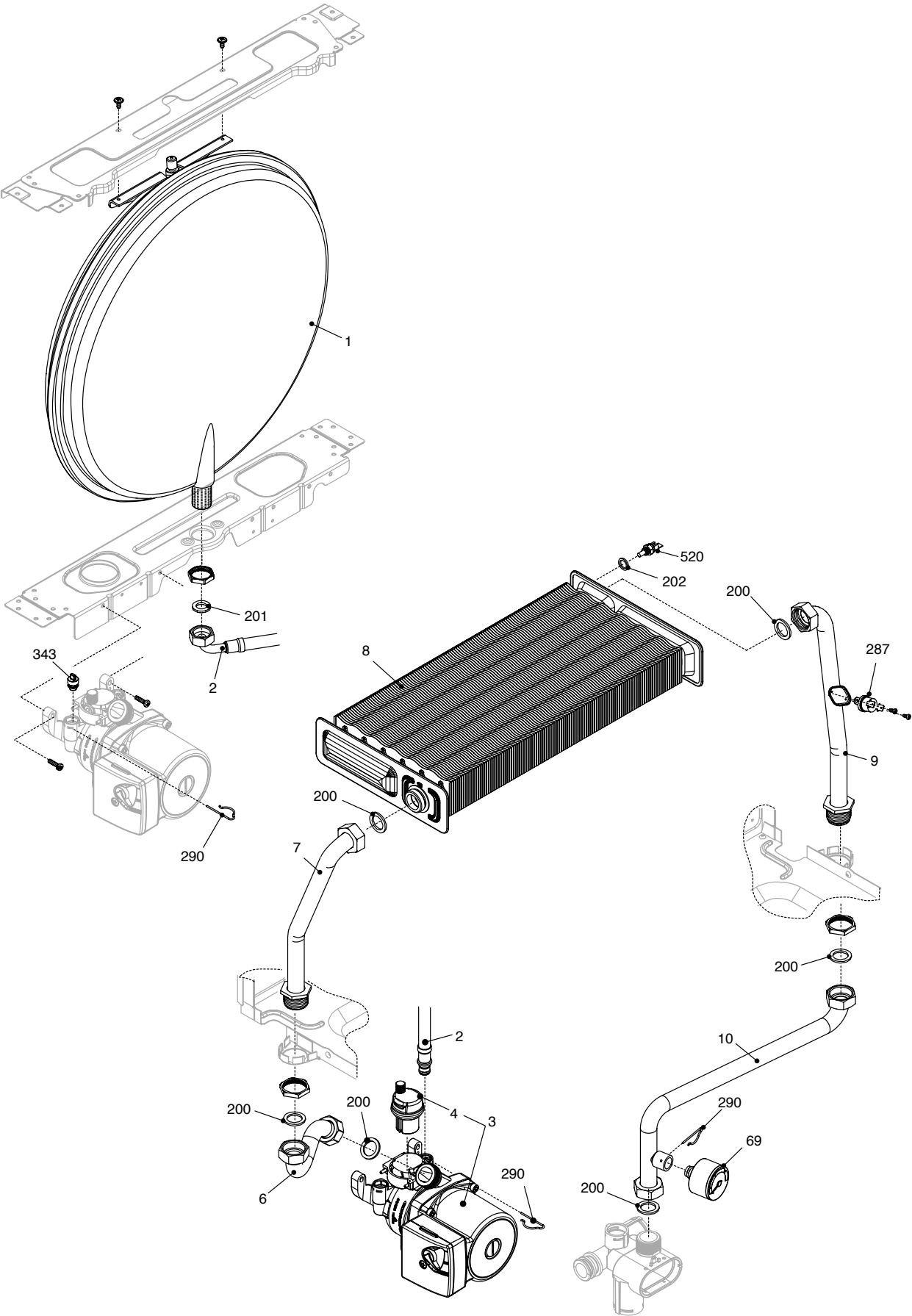
MODEL	PART NUMBER	
	MTN	GPL
Exclusive Mix 35 RSI	20029161 (G3C)	-



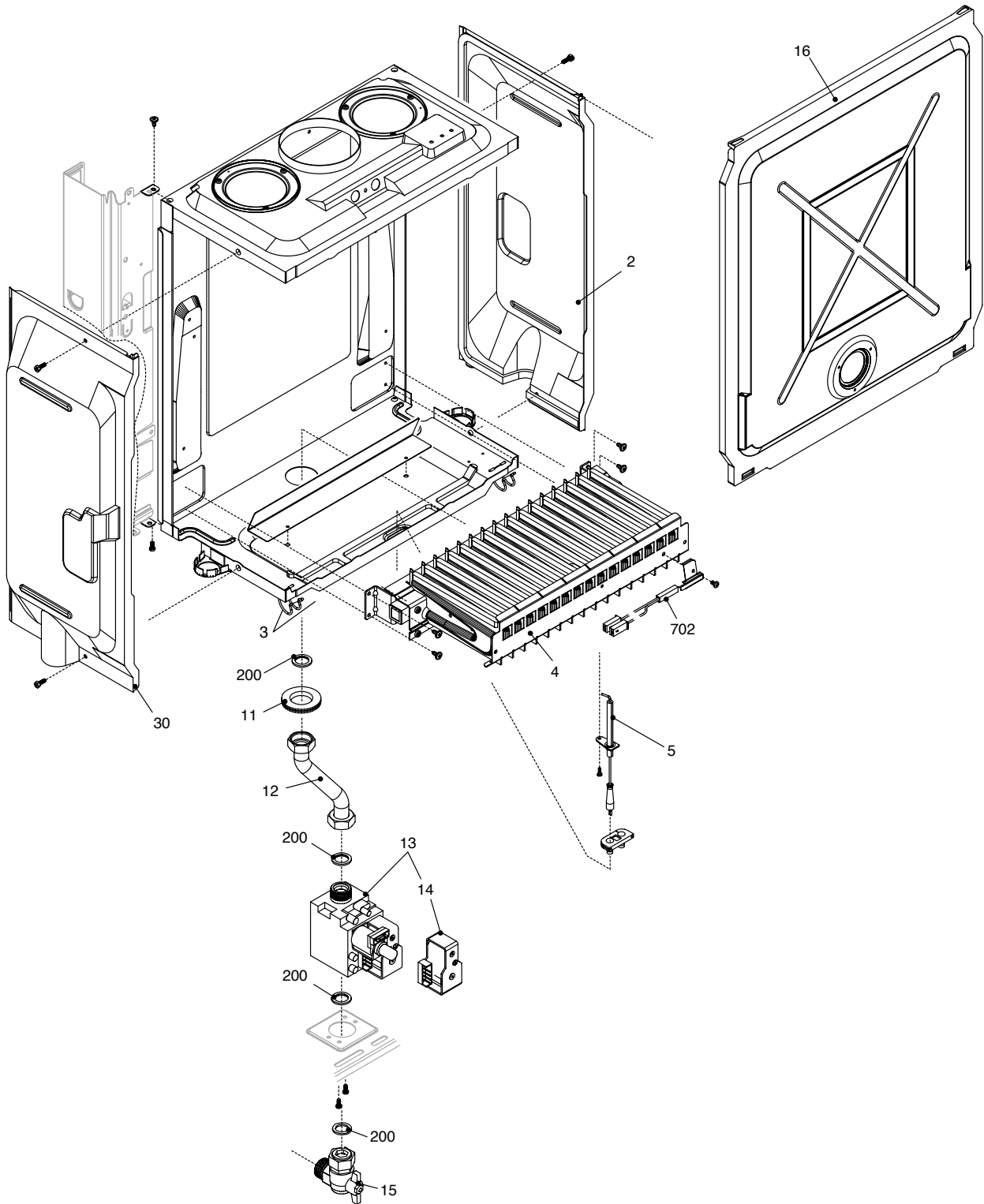
POS.	DESCRIPTION	35rsi
1	Frame assembly	R01005410
18	Cover	R10025843
20	Printed circuit board AB01B	R10029772
25	Cover	R10025842
26	Control panel	R10027677
31	Case	R10027745
226	Clip	R5128
470	Ignition transformer TR6	R10026031
500	Electric connection band	R10025873
501	Low tension cable	R10026715
502	Terminal blok low voltage Wiring harness	R10029959
503	Current supply wiring harness	R10025869



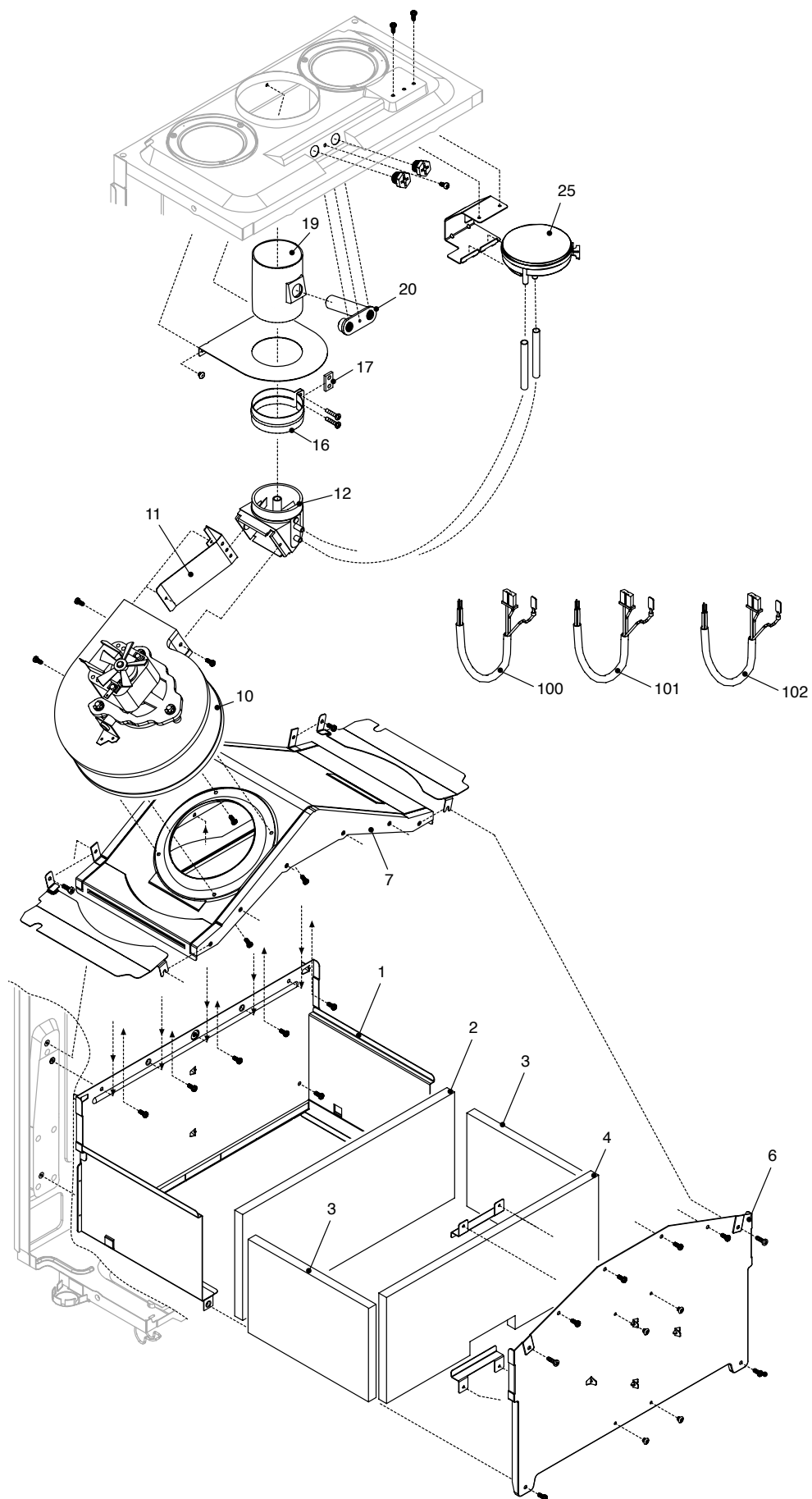
POS.	DESCRIPTION	35rsi
4	Non return valve	R10025056
6	By-pass casing	R10024641
7	By-pass valve	R1552
9	3-way heating manifold and cartridge	20024204
10	Cartridge	20017597
11	Actuator	20017594
13	Clip	20017598
22	Safety valve	20043820
25	Pipe	R10026714
27	Pipe	R10024961
37	Pipe	R10026713
47	Cover for by-pass assembly	R10024643
48	Cock	R10024646
50	Cover	R10027831
63	Pipe	R10025058
105	Pressure transducer	R10028142
200	Washer	R5023
280	Connection	R10025090
288	Ring	R6898
290	Clip	R2165
432	Clip	R10024958
435	Fitting/union	R10025059
436	Clip	R10025062
441	Clip	R10025063
442	O ring	R10025065
443	O ring	R10025064
444	Washer	R10025066
501	Nipple	R10026914
502	Nipple	R10026915
503	Fitting/union	R10026917
504	Fitting/union	R10026916



POS.	DESCRIPTION	35rsi
1	Expansion vessel	R2573
2	Pipe	R10025188
3	Pump	R10027258
4	Air vent bottle	R10025485
6	Pipe	R10027741
7	Pipe	R2051
8	Heat exchanger	R10024580
9	Pipe	R10020519
10	Pipe	R10027742
69	Pressure gauge	R10027135
200	Washer	R5023
201	Washer	R5026
202	Washer	R5041
287	High limit	R2258
290	Clip	R2165
343	Pump plug	R2216
520	NTC sensor	R10027352



POS.	DESCRIPTION	35rsi
2	Roomsealed chamber side	R2059
3	Air box clip	R0442
4	Gas valve cable	R10025872
5	Spark / ignition electrode	R10025985
11	Fire leader	R5927
12	Pipe	R10028044
13	Gas valve	20007784
14	Gas valve solenoid	20040675
15	3/4" gas cock	R2266
16	Cover assembly	R10020430
30	Roomsealed chamber side	R2060
200	Washer	R5023
702	Thermostat	20031348



POS.	DESCRIPTION	35rsi
1	Combustion chamber assembly	R10024751
2	Back insulatin panel	R10020518
3	Protection	R5271
4	Combustion chamber insulation panel	R10020517
6	Combustion chamber cover	R10024794
7	Flue draught diverter	R1968
10	Fan	R10024577
11	Closure	R5742
12	Fan to flue connector	R10023183
16	Clamp	R5916
17	Washer	R5917
18	Panel	R5923
19	Fan flue connection	R8083
20	Block with combustion analysis check point	R10026933
25	Pressure differential switch	R2677
100	Combustion cable	R10027743
101	wiring harness - fan	R10028372
102	wiring harness - fan	R10028373

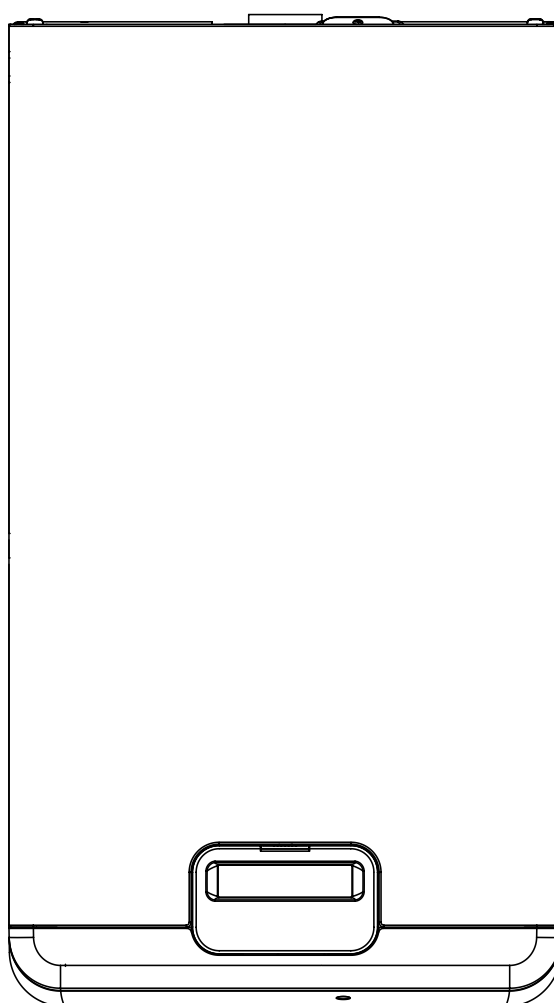
Rev.	data	Descrizione
1.0	14/07/11	Inserito degasatore del circolatore E00120110317 : nuova bobina valvola gas
2.0	26/06/2013	Aggiunto coperchio camera combustione – Aggiunte clip scatola aria E00120120115 : valvola gas – E00120110494 : Valvola di sicurezza



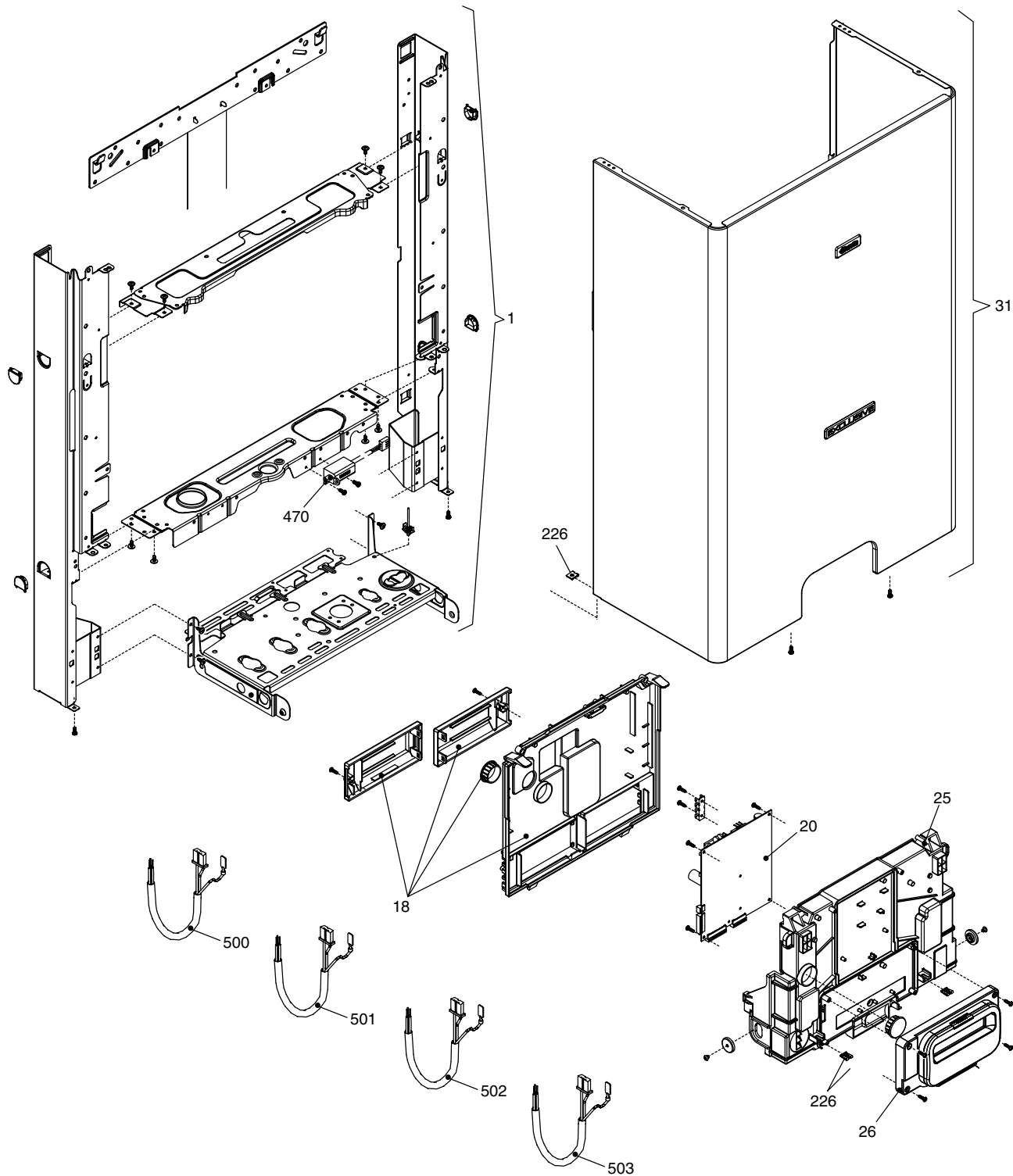
Beretta reserve the right to change the specifications without prior notice.
Consumers' statutory rights are not affected.

Wall hung boilers

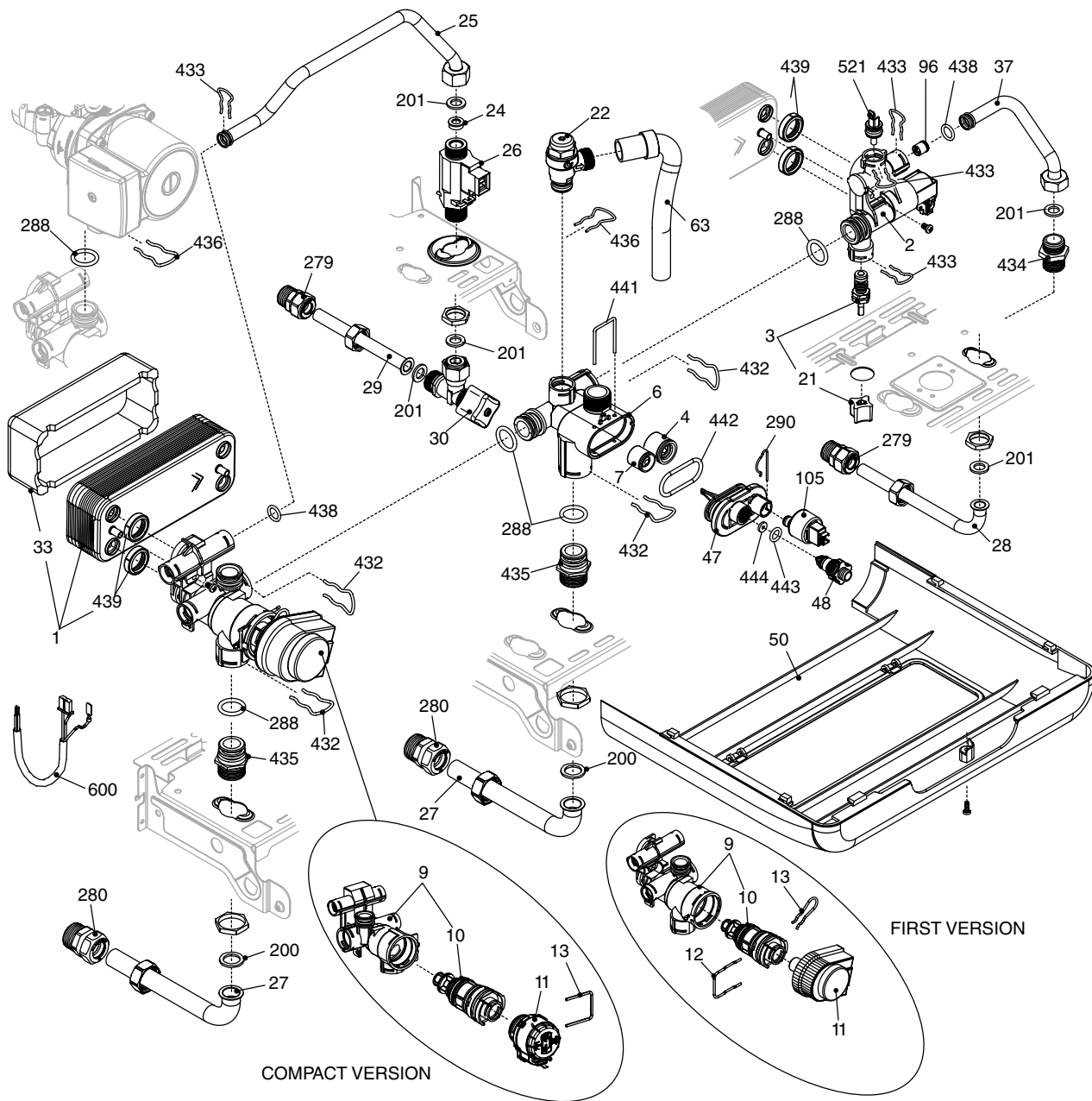
Exclusive Mix



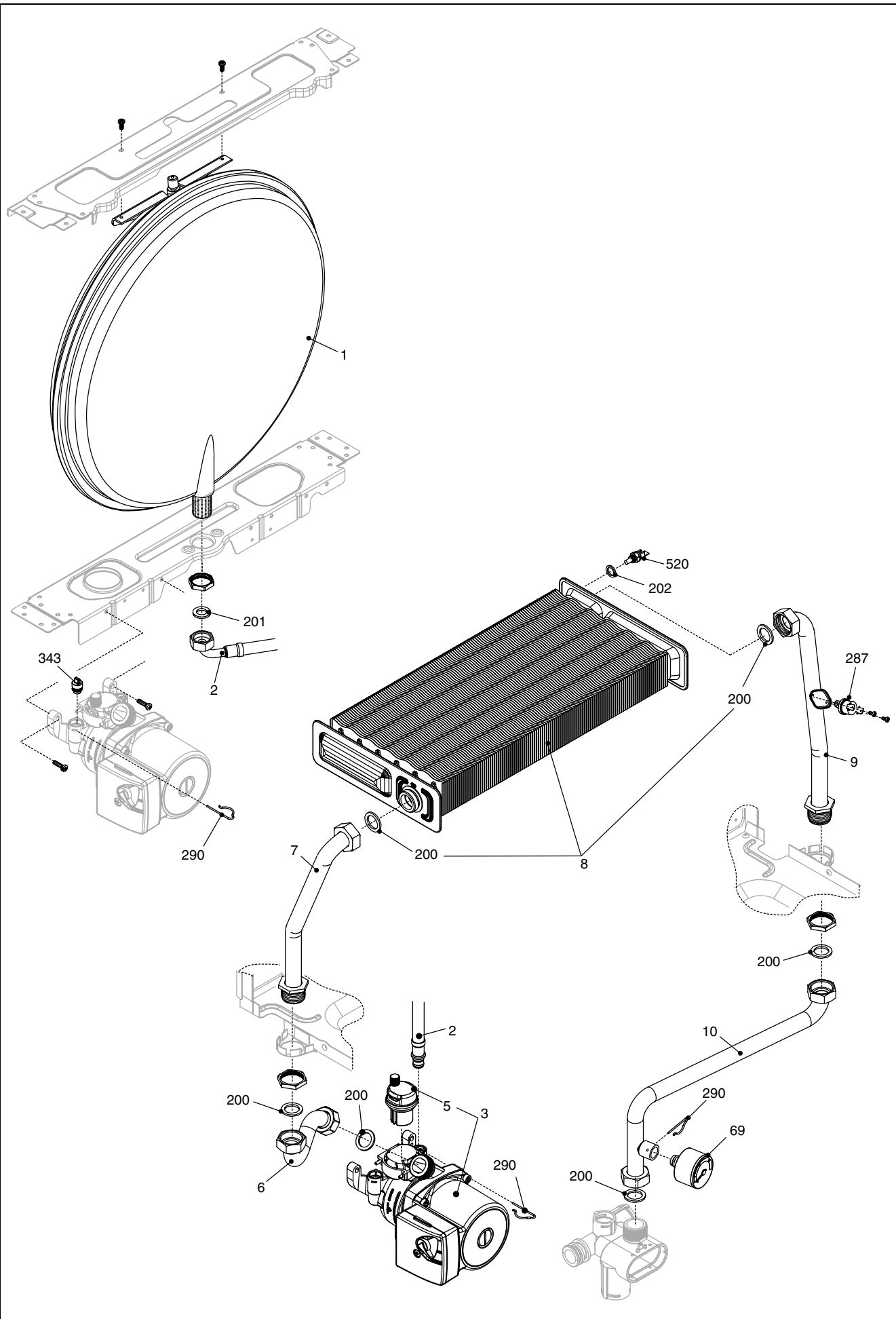
MODEL	PART NUMBER	
	MTN	GPL
Exclusive Mix 35 CSI	1150383 (A6M)	1150385 (A7M)



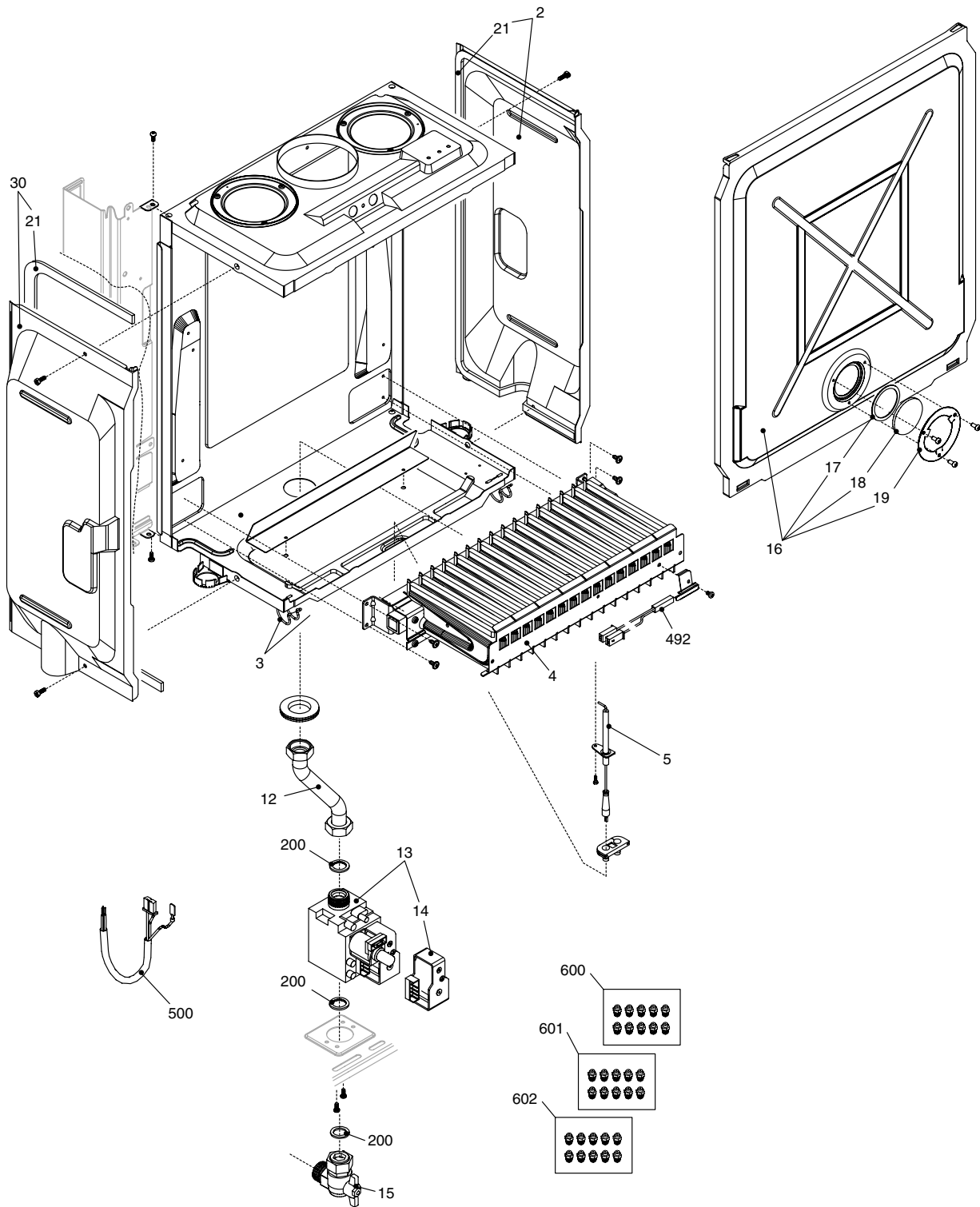
POS.	DESCRIPTION	35 csi
1	Frame assembly	R01005410
18	Cover	R10025843
20	Printed circuit board	R10029772
25	Cover	R10025842
26	Dash board	R10027674
31	Case	R10027745
226	Edge clip	R5128
470	Transformer	R10026031
500	Supply cable	R10025869
501	Low tension cable	R10025871
502	Electric connection band	R10025873
503	Connection cable	R10029959



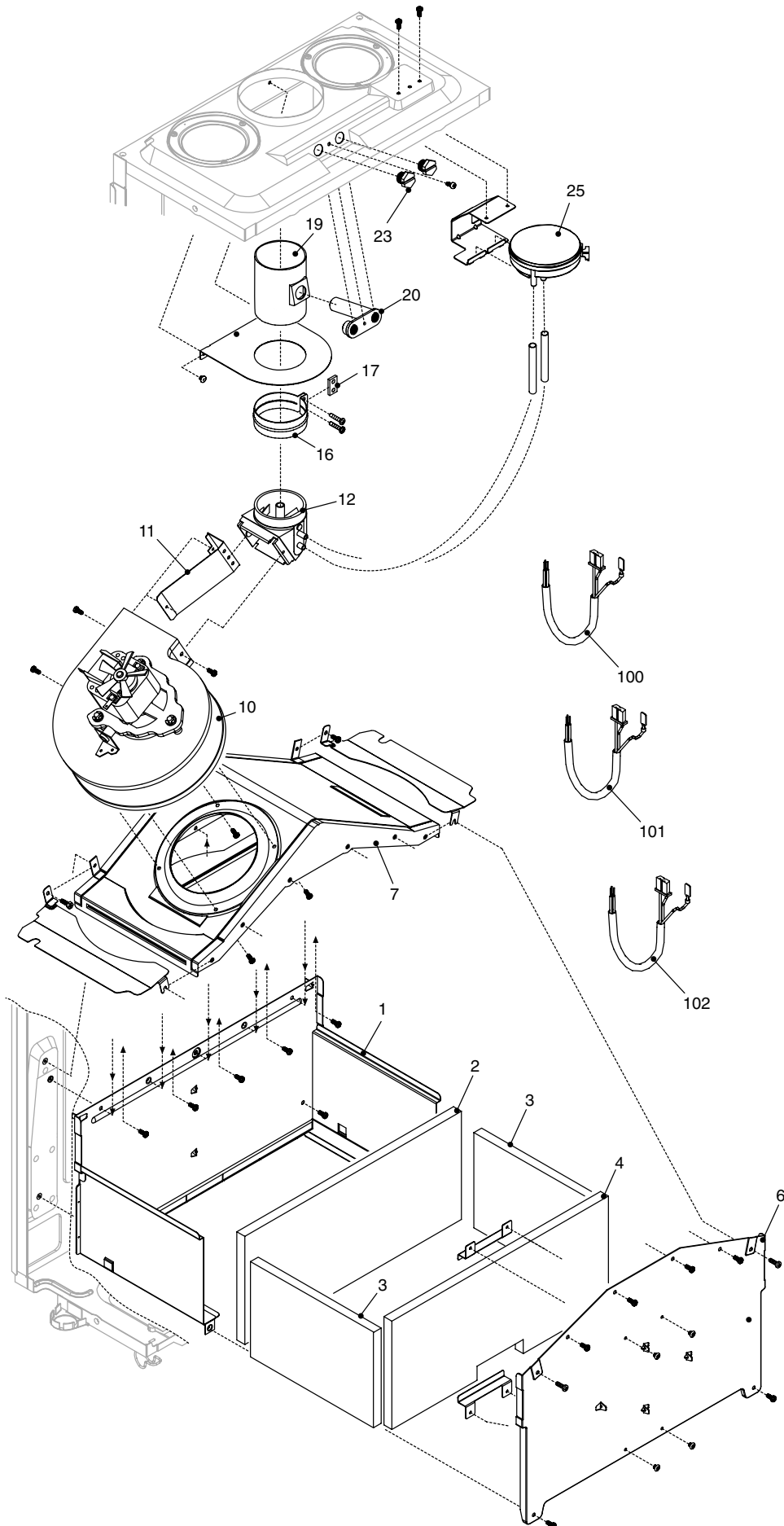
POS.	DESCRIPTION	35 csi
1	Domestic water heat exchanger	R10024627
2	Connection	R10026857
3	Filling cock	R10025060
4	Non return valve	R10025056
6	By-pass casing	R10024641
7	Heating by-pass valve	R1552
9	Heating manifold and cartridge (First version)	R10026508
9	Heating manifold and cartridge (Compact version)	20021496
10	3 way valve cartridge (First version)	R10025305
10	3 way valve cartridge (Compact version)	20043594
11	Motorised valve (First version)	R10025304
11	Motorised valve (Compact version)	20017594
12	Clip	R10025450
13	Clip (First version)	R10025449
13	Clip (Compact version)	20017598
21	Filling cock knob	R6889
22	Safety valve	20043820
24	Flow governor	R10026042
25	Pipe	R10025839
26	Dhw actuator	R10022348
27	Pipe	R10024961
28	Pipe	R10024962
29	Pipe	R10024963
30	Water supply stop cock	R1888
33	Insulator	20007047
37	Pipe	R10025840
47	Cover for by-pass assembly	R10024643
48	Discharge cock	R10024646
50	Connections cover	R10027831
63	Pipe	R10025058
96	Non return valve	R10021625
105	Pressure transducer	R10028142
200	Gasket	R5023
201	Gasket	R5026
279	Connection	R10025089
280	Connection	R10025090
288	Piston seal	R6898
290	Clip	R2165
432	Clip	R10024958
433	Clip	R10024986
434	1/2" nipple	R10024985
435	Connector	R10025059
436	Clip	R10025062
438	O-ring	R10024988
439	Washer	R10025067
441	Clip	R10025063
442	O-ring	R10025065
443	O-ring	R10025064
444	Washer	R10025066
521	Ntc sensor	R10027351
600	Wiring harness (First version)	R10025867
600	Wiring harness Compact version)	20045531



POS.	DESCRIPTION	35 csi
1	10 lt. expansion vessel	R2573
2	Flexible pipe	R10025188
3	Pump	R10027258
5	Automatic air vent bottle	R10025485
6	Pipe	R10027741
7	Pipe	R2051
8	Heat exchanger	R10024580
9	Pipe	R10020519
10	Pipe	R10027742
69	Pressure gauge	R10027135
200	Gasket	R5023
201	Gasket	R5026
202	Gasket	R5041
287	High limit thermostat	R2258
290	Clip	R2165
343	Plug	R2216
520	Ntc sensor	20004832



POS.	DESCRIPTION	35 csi
2	Air box side with washer	R2059
3	Air box clip	R0442
4	Burner	R10027738
5	Spark-sensing electrode	R10025985
12	Gas train	R10028044
13	Gas valve	20007784
14	Gas valve solenoid	20040675
15	Gas cock connection	R2266
16	Cover assembly	R10020430
17	Washer	R5072
18	Pilot sight glass	R3139
19	Ferrule	R4007
21	Washer	R5905
30	Air box side with washer	R2060
200	Gasket	R5023
492	Burner thermostat	R10026721
500	Gas valve cable	R10025872
600	G20 conversion kit	20019927
601	Lpg conversion kit	20019928
602	G25 conversion kit	R01005507



POS.	DESCRIPTION	35 csi
1	Combustion chamber assembly	R10024751
2	Combustion chamber insulation panel	R10020518
3	Lateral panel	R5271
4	Combustion chamber insulation panel	R10020517
6	Combustion chamber cover	R10024794
7	Hood assembly	R1968
11	Closure	R5742
10	Fan	R10024577
12	Fan to flue connector	R10023183
16	Clamp for 60 diam. tube	R5916
17	Washer clamp	R5917
19	Fan flue connection	R8083
20	Block with combustion analysis check point	R10026933
23	Plug	R8086
25	Pressure switch	R2677
100	Wiring harness (combustion)	R10027743
101	Wiring harness (fan)	R10028372
102	Wiring harness	R10028373

Rev.	data	Descrizione
1.0	16/02/06	Modifiche varie
2.0	23/03/06	Modifiche varie
3.0	10/04/07	Modifiche varie
4.0	28/03/08	Modifiche varie
5.0	19/11/09	E00120080360 : coibente - Aggiunte trasformazioni
6.0	12/07/11	E00120100019 : molletta circolatore Evidenziato rubinetto di riempimento Evidenziato degasatore del circolatore E00120110317 : nuova bobina valvola gas
7.0	22/11/2011	E00120110639 : valvola tre vie, valvola di non ritorno
8.0	26/06/2013	Aggiunto coperchio camera combustione – E00120120115 : valvola gas E00120110494 : Valvola di sicurezza

