



Similar to figure

Data sheet

Hydraulic data

Maximum operating pressure P_N	10 bar
Delivery head for Q_{min} H_{Qmin}	9.3 m
Max. volume flow Q_{max}	9.5 m³/h
Min. fluid temperature for HVAC applications T_{min}	0 °C
Max. fluid temperature for HVAC applications T_{max}	80 °C
Min. fluid temperature for drinking water applications T_{min}	0
Max. fluid temperature for drinking water applications T_{max}	80
Max. fluid temperature for drinking water applications in short-time duty (2 hours) T_{max}	110 °C
Min. ambient temperature T_{min}	0 °C
Max. ambient temperature T_{max}	40 °C
Max. permitted total water hardness	3.57 mmol/l (20°dH) (3.21 mmol/l (18°dH) for 20/4 + 25/6)

Motor data

Mains connection	1~230 V, 50 Hz
Rated power P_2	180 W
Rated current I_N	1.62 A
Max. speed n_{max}	2800 1/min
Power consumption $P_{1 min}$	150 W
Power consumption $P_{1 max}$	335 W
Emitted interference	EN 61000-6-3
Interference resistance	EN 61000-6-2
Protection class motor	IPX4D
Insulation class	H
Threaded cable connection	2 x PG13.5
Motor protection	External protection WSK

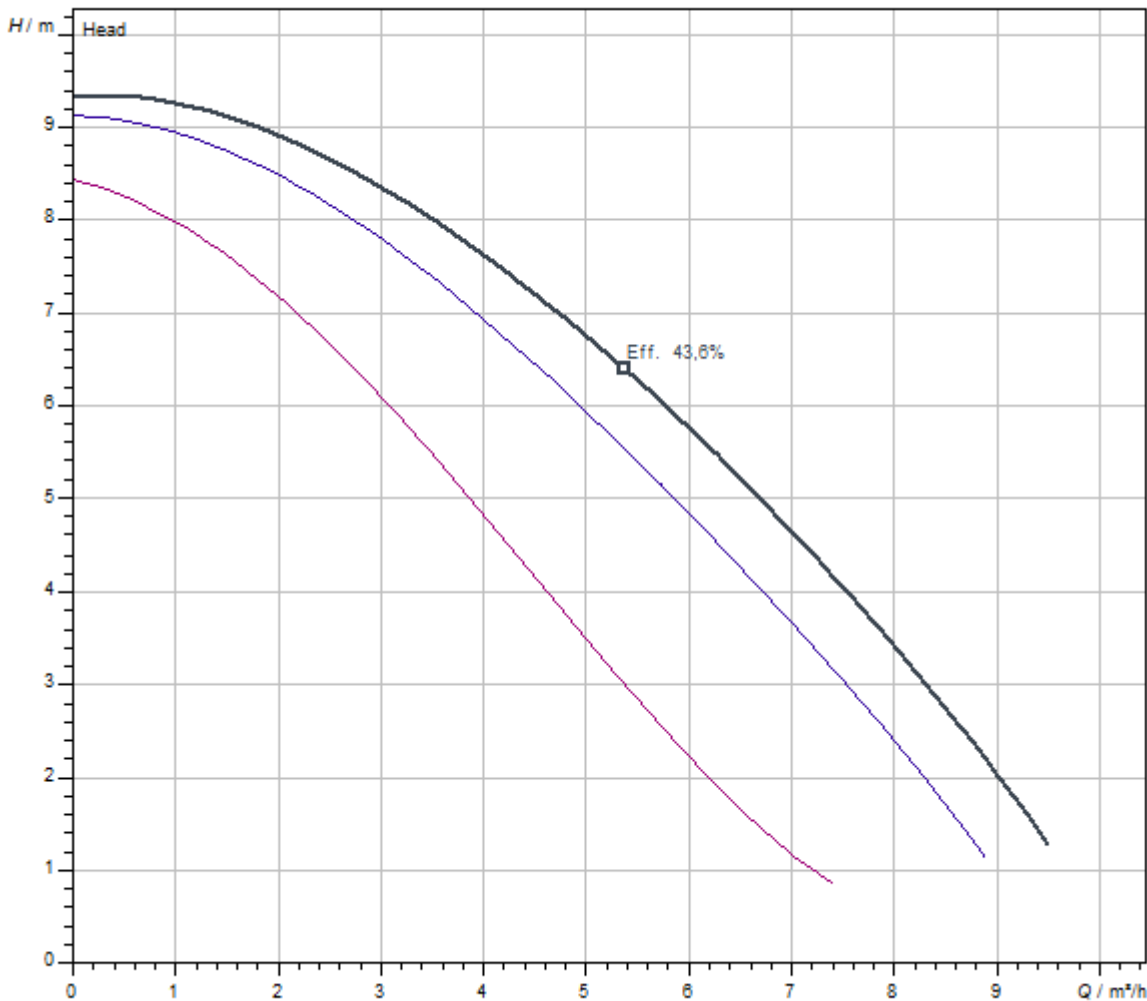
Materials

Pump housing	Bronze, CC499K
Impeller	PPE-GF30
Shaft	Stainless steel
Bearing	Carbon, synthetic resin-impregnated

Installation dimensions

Pipe connection on the suction side D_Ns	G 1½
Pipe connection on the discharge side D_Nd	G 1½
Port-to-port length L_0	180 mm

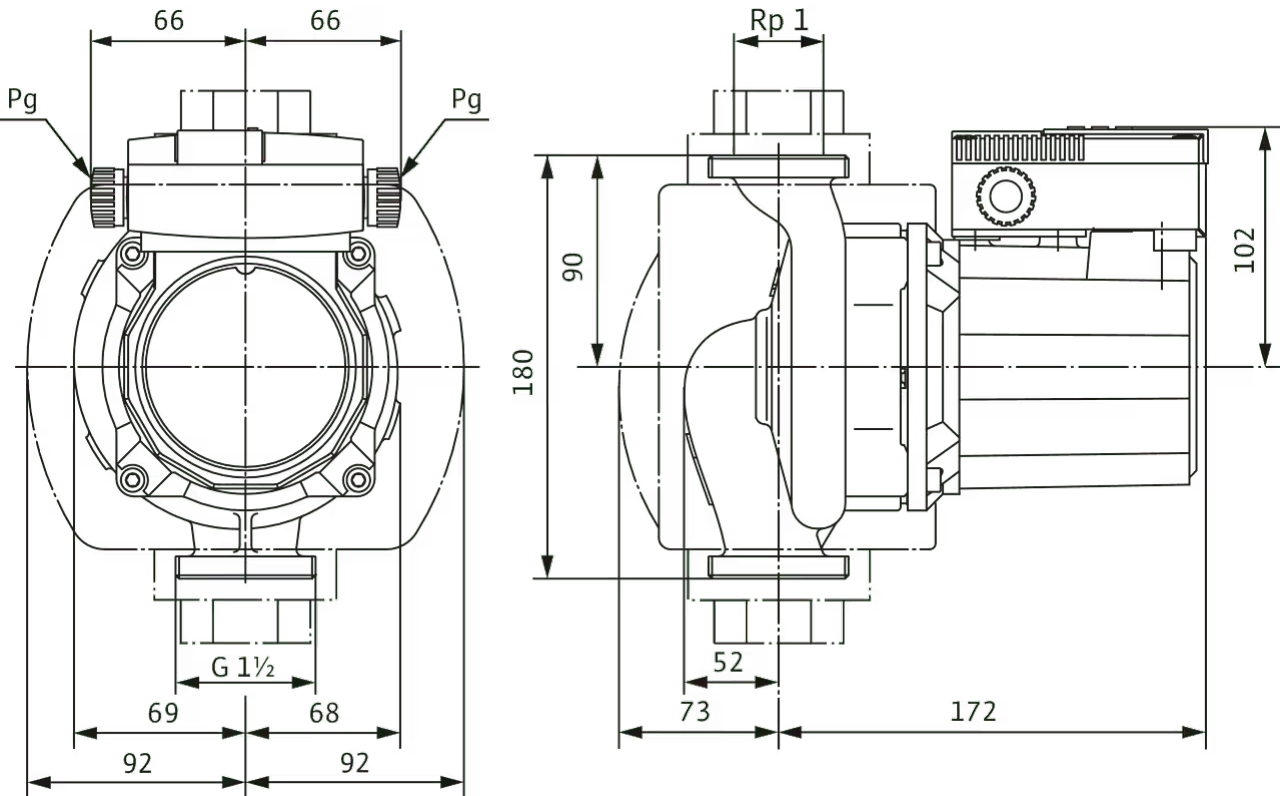
Pump curves



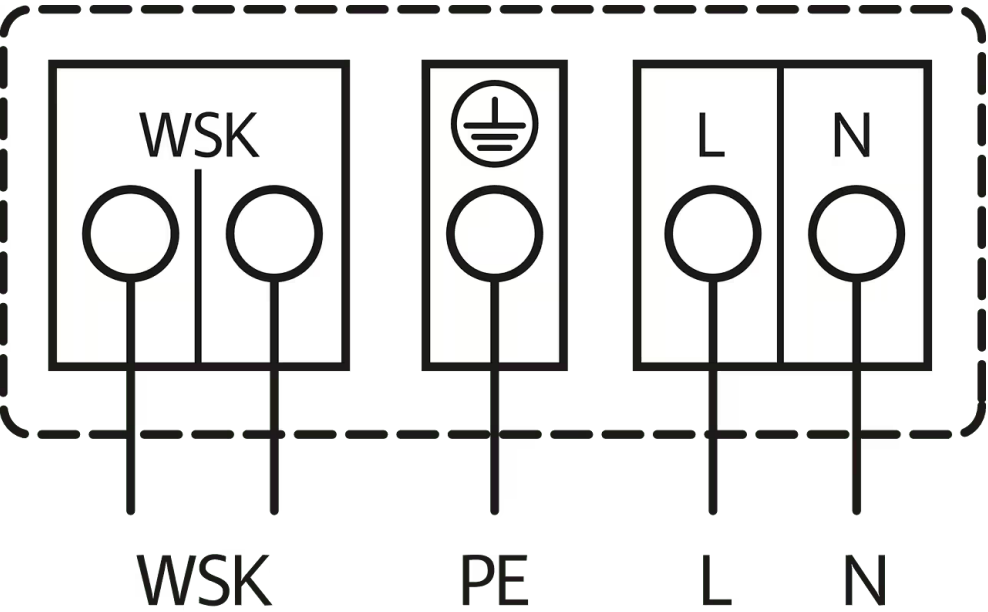
Fluid media	Water 100 %
Fluid temperature <i>T</i>	20,00 °C
speed at duty point <i>n hydr. @ OP</i>	2.700 1/min

Dimensions and dimensions drawings

TOP-S



Wiring diagram



Mains connection, 1~230 V, 50 Hz

WSK = thermal winding contact

Full motor protection at all speed stages with optional tripping unit

SK 602N/SK 622N or other switchgear/control devices with WSK connection option

Triggering: External tripping at switchgear/control device

Reset: Automatic fault acknowledgement after cooling off of the motor

Automatic

Ordering information

Product data

Brand	Wilo
Product description	TOP-Z 25/10 (1~230 V, PN 10, RG)
Article number	2061964 ↗
EAN number	4016322891987
Colour	green/bronze
Minimum order quantity	1
Date of sales availability	2010-01-01

Packaging

Packaging type	Cardboard box
Packaging property	Transport packaging
Pieces per pallet	96
Number per layer	16

Dimension, weight

Length with packaging	270 mm
Length <i>L</i>	180 mm
Height with packaging	215 mm
Height <i>H</i>	245 mm
Width with packaging	178 mm
Width <i>W</i>	184 mm
Gross weight, approx. <i>m</i>	7.8 kg
Net weight, approx. <i>m</i>	6.7 kg

Tender text

This circulator is suitable only for drinking water.

Can be used for domestic hot water circulation systems in the industry and building services.

Glandless circulator with screwed or flange connection, preselectable speed stages for power adjustment.

Equipment and function

- > Manual power adjustment with 3 speed stages
- > Pumps with 1~ motor:
 - > P2 up to 90 W: internal protection against unacceptably high winding temperatures
 - > P2 = 180 W: Full motor protection with thermal winding contacts in conjunction with tripping unit
- > Pumps with 3~ motor:
 - > P2 up to 90 W: internal protection against unacceptably high winding temperatures
 - > P2 ≥ 180 W: Full motor protection with integrated trip electronics
- > Fault signal light
- > Contact for collective fault signal
- > Direction of rotation signal lamp
- > Mains connection 3~, 230 V with optional switching plug
- > Pump housing in red brass or grey cast iron (stainless steel depending on type)
- > PN 6/PN 10 combination flange (for DN 40 to DN 65)
- > Thermal insulation shells
- > Additional functions by retrofittable Protect Module C:
 - > SSM fault signal as potential-free NC contact
 - > SBM run signal as potential-free NO contact
 - > "Overriding Off" control input via external potential-free contact (NC contact)
 - > Blocking detection
 - > Full motor protection with tripping unit
 - > Fault acknowledgement
- > Dual pump management (two single pumps installed in parallel): Main/standby operation (automatic fault-actuated switchover/time-dependent pump cycling)

Operating Data

Max. fluid temperature T_{\max}	80 °C
Min. fluid temperature T_{\min}	0 °C
Min. ambient temperature T_{\min}	0 °C
Max. ambient temperature T_{\max}	40 °C
Temperature range at max. ambient temperature +40 °C T	-20...+110
Maximum operating pressure PN	10 bar

Operating Data

Max. permitted total water hardness	3.57 mmol/l (20°dH) (3.21 mmol/l (18°dH) for 20/4 + 25/6)
-------------------------------------	---

Motor data

Emitted interference	EN 61000-6-3
Interference resistance	EN 61000-6-2
Mains connection	1~230 V, 50 Hz
Power consumption $P_{1\text{ max}}$	335 W
Max. speed n_{max}	2800 1/min
Rated current I_N	1.62 A
Protection class motor	IPX4D
Threaded cable connection	2 x PG13.5


Materials

Pump housing	Bronze, CC499K
Impeller	PPE-GF30
Shaft	Stainless steel
Bearing	Carbon, synthetic resin-impregnated

Installation dimensions

Pipe connection on the suction side DN_s	G 1½
Pipe connection on the discharge side DN_d	G 1½
Port-to-port length L_0	180 mm

Ordering information

Brand	Wilo
Product description	TOP-Z 25/10 (1~230 V, PN 10, RG)
Net weight, approx. m	6.7 kg
Article number	2061964 

Mechanical accessories**Pipe installation****Screwed connections/adapters**

Screwed connection R 1/∅ 28 i x G 1½, 1 Set	112047195
Screwed connection R 1/∅ 28 i x G 1½, 24 Set	112047596
Adapter G 1½/G 2	4105914

Pipe installation, adapter fitting**Threaded adapter R**

Threaded adapter R 5, MS	110678298
Threaded adapter R 12, MS	110788294

Electrical accessories

Pump control

Timer switch SK 601N

Switchgear SK 601N	2120443
--------------------	---------

Motor protection

SK 602N

Switchgear SK 602N	2120444
--------------------	---------

SK 622N

Switchgear SK 622N	2120445
--------------------	---------

Services

With Wilo as your partner, you can not only be sure of choosing high-quality product solutions, but also of benefiting from a comprehensive, worry-free package of well thought-out services. We collaborate to develop a service concept tailored to your individual needs; with our expertise and personal consultancy, we make sure that the operation of your systems is as energy-efficient, reliable and economical as possible. All the while our competent Wilo service technicians are ready to assist you with fast, reliable and on-time support.

Recommended services

Wilo-Live Assistant Service	2216415
System Optimisation Glandless pumps	2219250
Energy Solutions Glandless pumps	2219285

More suitable services

Extended Warranty Glandless pumps	2219589
Supervision Glandless pumps	2219320
Installation Glandless pumps	2219355
Commissioning Glandless pumps	2219390
Maintenance BASIC Glandless pumps	2219530
Maintenance COMFORT Glandless pumps	2219416
Maintenance PREMIUM Glandless pumps	2219545
Repair Glandless pumps	2219609



Similar to figure

Data sheet

Hydraulic data

Maximum operating pressure P_N	10 bar
Delivery head for Q_{min} H_{Qmin}	9.3 m
Max. volume flow Q_{max}	9.5 m³/h
Min. fluid temperature for HVAC applications T_{min}	0 °C
Max. fluid temperature for HVAC applications T_{max}	80 °C
Min. fluid temperature for drinking water applications T_{min}	0
Max. fluid temperature for drinking water applications T_{max}	80
Max. fluid temperature for drinking water applications in short-time duty (2 hours) T_{max}	110 °C
Min. ambient temperature T_{min}	0 °C
Max. ambient temperature T_{max}	40 °C
Max. permitted total water hardness	3.57 mmol/l (20°dH) (3.21 mmol/l (18°dH) for 20/4 + 25/6)

Motor data

Mains connection	1~230 V, 50 Hz
Rated power P_2	180 W
Rated current I_N	1.62 A
Max. speed n_{max}	2800 1/min
Power consumption $P_{1 min}$	150 W
Power consumption $P_{1 max}$	335 W
Emitted interference	EN 61000-6-3
Interference resistance	EN 61000-6-2
Protection class motor	IPX4D
Insulation class	H
Threaded cable connection	2 x PG13.5
Motor protection	External protection WSK

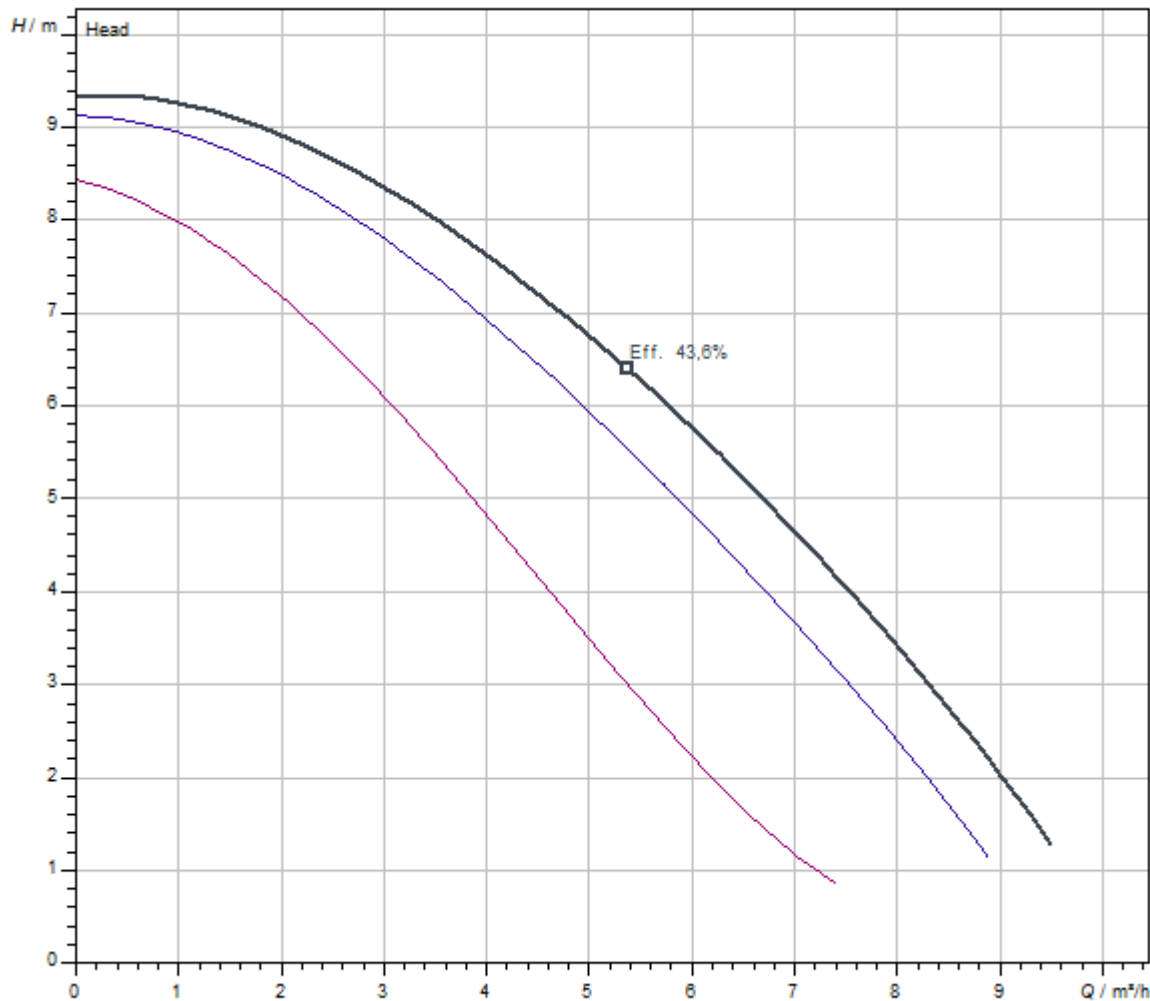
Materials

Pump housing	Bronze, CC499K
Impeller	PPE-GF30
Shaft	Stainless steel
Bearing	Carbon, synthetic resin-impregnated

Installation dimensions

Pipe connection on the suction side D_Ns	G 2
Pipe connection on the discharge side D_Nd	G 2
Port-to-port length L_0	180 mm

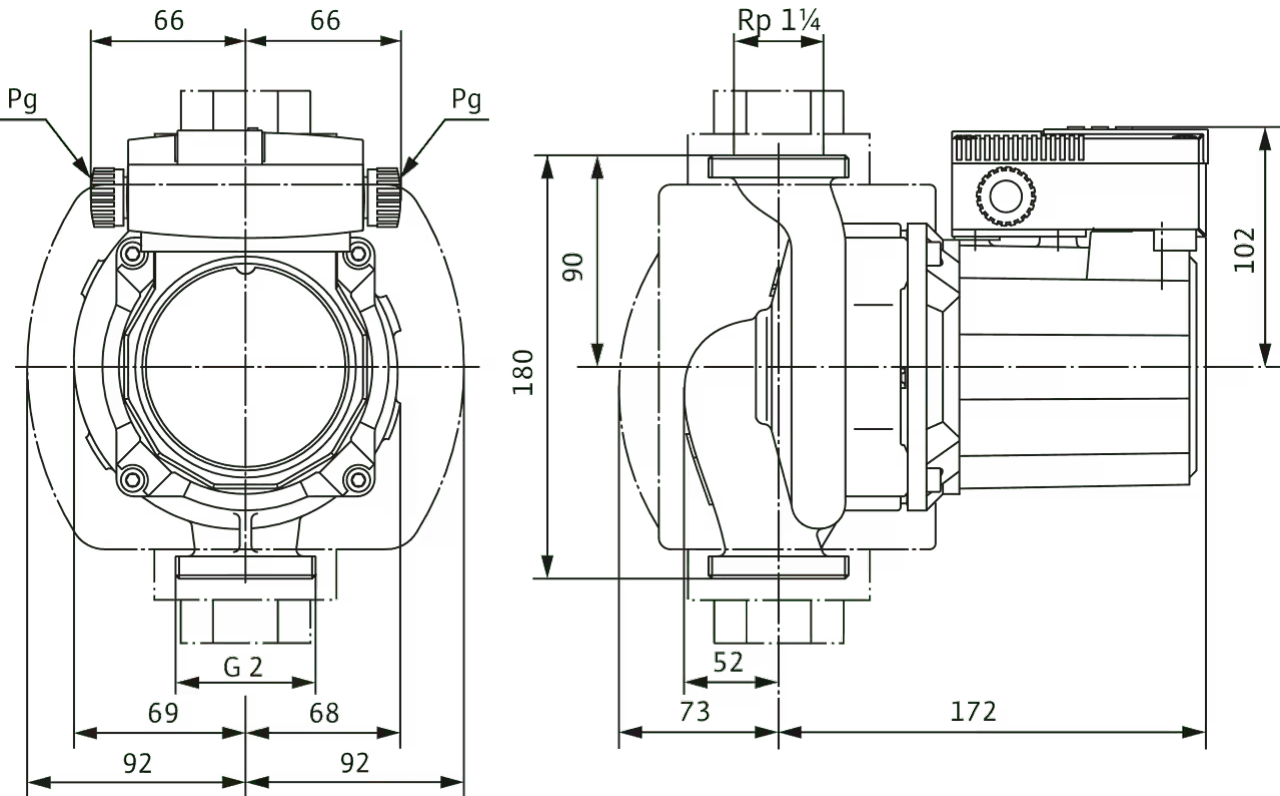
Pump curves



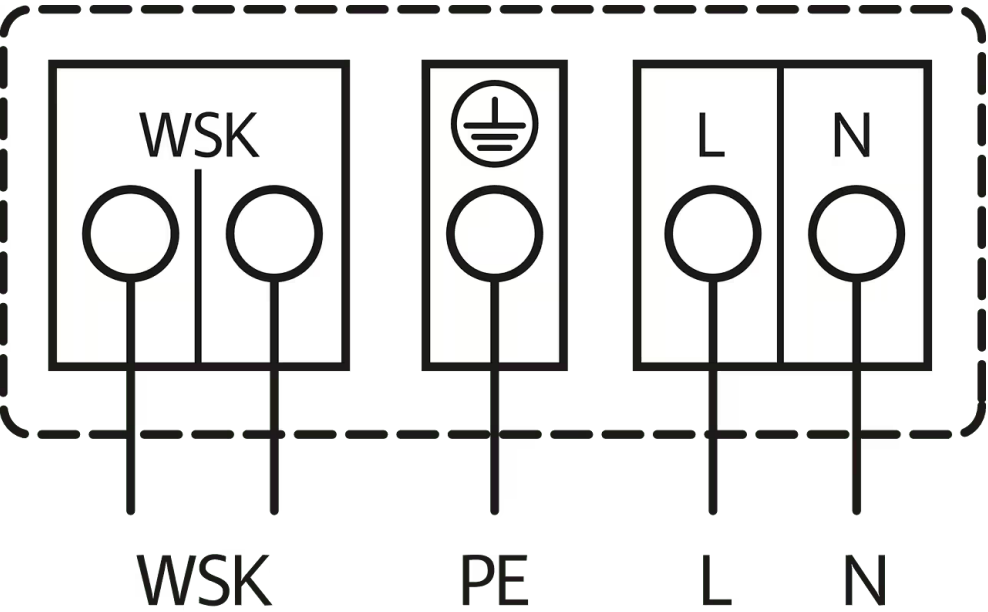
Fluid media	Water 100 %
Fluid temperature <i>T</i>	20,00 °C
speed at duty point <i>n hydr. @ OP</i>	2.700 1/min

Dimensions and dimensions drawings

TOP-S



Wiring diagram



Mains connection, 1~230 V, 50 Hz

WSK = thermal winding contact

Full motor protection at all speed stages with optional tripping unit

SK 602N/SK 622N or other switchgear/control devices with WSK connection option


Triggering: External tripping at switchgear/control device

Reset: Automatic fault acknowledgement after cooling off of the motor

Automatic

Ordering information

Product data

Brand	Wilo
Product description	TOP-Z 30/10 (1~230 V, PN 10, RG)
Article number	2059857 
EAN number	4016322864295
Colour	green/bronze
Minimum order quantity	1
Date of sales availability	2010-01-01

Packaging

Packaging type	Cardboard box
Packaging property	Transport packaging
Pieces per pallet	96
Number per layer	16

Dimension, weight

Length with packaging	270 mm
Length <i>L</i>	180 mm
Height with packaging	215 mm
Height <i>H</i>	245 mm
Width with packaging	178 mm
Width <i>W</i>	184 mm
Gross weight, approx. <i>m</i>	7.6 kg
Net weight, approx. <i>m</i>	6.7 kg

Tender text

This circulator is suitable only for drinking water.

Can be used for domestic hot water circulation systems in the industry and building services.

Glandless circulator with screwed or flange connection, preselectable speed stages for power adjustment.

Equipment and function

- > Manual power adjustment with 3 speed stages
- > Pumps with 1~ motor:
 - > P2 up to 90 W: internal protection against unacceptably high winding temperatures
 - > P2 = 180 W: Full motor protection with thermal winding contacts in conjunction with tripping unit
- > Pumps with 3~ motor:
 - > P2 up to 90 W: internal protection against unacceptably high winding temperatures
 - > P2 ≥ 180 W: Full motor protection with integrated trip electronics
- > Fault signal light
- > Contact for collective fault signal
- > Direction of rotation signal lamp
- > Mains connection 3~, 230 V with optional switching plug
- > Pump housing in red brass or grey cast iron (stainless steel depending on type)
- > PN 6/PN 10 combination flange (for DN 40 to DN 65)
- > Thermal insulation shells
- > Additional functions by retrofittable Protect Module C:
 - > SSM fault signal as potential-free NC contact
 - > SBM run signal as potential-free NO contact
 - > "Overriding Off" control input via external potential-free contact (NC contact)
 - > Blocking detection
 - > Full motor protection with tripping unit
 - > Fault acknowledgement
- > Dual pump management (two single pumps installed in parallel): Main/standby operation (automatic fault-actuated switchover/time-dependent pump cycling)

Operating Data

Max. fluid temperature T_{\max}	80 °C
Min. fluid temperature T_{\min}	0 °C
Min. ambient temperature T_{\min}	0 °C
Max. ambient temperature T_{\max}	40 °C
Temperature range at max. ambient temperature +40 °C T	-20...+110
Maximum operating pressure PN	10 bar

Operating Data

Max. permitted total water hardness	3.57 mmol/l (20°dH) (3.21 mmol/l (18°dH) for 20/4 + 25/6)
-------------------------------------	---

Motor data

Emitted interference	EN 61000-6-3
Interference resistance	EN 61000-6-2
Mains connection	1~230 V, 50 Hz
Power consumption $P_{1\text{ max}}$	335 W
Max. speed n_{max}	2800 1/min
Rated current I_N	1.62 A
Protection class motor	IPX4D
Threaded cable connection	2 x PG13.5


Materials

Pump housing	Bronze, CC499K
Impeller	PPE-GF30
Shaft	Stainless steel
Bearing	Carbon, synthetic resin-impregnated

Installation dimensions

Pipe connection on the suction side DN_s	G 2
Pipe connection on the discharge side DN_d	G 2
Port-to-port length L_0	180 mm

Ordering information

Brand	Wilo
Product description	TOP-Z 30/10 (1~230 V, PN 10, RG)
Net weight, approx. m	6.7 kg
Article number	2059857 

Mechanical accessories

Pipe installation

Screwed connections/adapters

Screwed connection R 1¼/∅ 35 i x G 2, 1 Set	112082691
Screwed connection R 1¼/∅ 35 i x G 2, 24 Set	112082794

Pipe installation, adapter fitting

Threaded adapter R

Threaded adapter R 22, MS	110680092
---------------------------	-----------

Electrical accessories

Pump control

Timer switch SK 601N

Switchgear SK 601N	2120443
--------------------	---------

Motor protection

SK 602N

Switchgear SK 602N	2120444
--------------------	---------

SK 622N

Switchgear SK 622N	2120445
--------------------	---------

Services

With Wilo as your partner, you can not only be sure of choosing high-quality product solutions, but also of benefiting from a comprehensive, worry-free package of well thought-out services. We collaborate to develop a service concept tailored to your individual needs; with our expertise and personal consultancy, we make sure that the operation of your systems is as energy-efficient, reliable and economical as possible. All the while our competent Wilo service technicians are ready to assist you with fast, reliable and on-time support.

Recommended services

Wilo-Live Assistant Service	2216415
System Optimisation Glandless pumps	2219250
Energy Solutions Glandless pumps	2219285

More suitable services

Extended Warranty Glandless pumps	2219589
Supervision Glandless pumps	2219320
Installation Glandless pumps	2219355
Commissioning Glandless pumps	2219390
Maintenance BASIC Glandless pumps	2219530
Maintenance COMFORT Glandless pumps	2219416
Maintenance PREMIUM Glandless pumps	2219545
Repair Glandless pumps	2219609



Similar to figure

Data sheet

Hydraulic data

Maximum operating pressure P_N	10 bar
Delivery head for Q_{min} H_{Qmin}	6.0 m
Max. volume flow Q_{max}	5.5 m³/h
Min. fluid temperature for HVAC applications T_{min}	0 °C
Max. fluid temperature for HVAC applications T_{max}	65 °C
Min. fluid temperature for drinking water applications T_{min}	0
Max. fluid temperature for drinking water applications T_{max}	65
Max. fluid temperature for drinking water applications in short-time duty (2 hours) T_{max}	80 °C
Min. ambient temperature T_{min}	0 °C
Max. ambient temperature T_{max}	40 °C
Max. permitted total water hardness	3.57 mmol/l (20°dH) (3.21 mmol/l (18°dH) for 20/4 + 25/6)

Motor data

Mains connection	1~230 V, 50 Hz
Rated power P_2	100 W
Rated current I_N	1 A
Max. speed n_{max}	2390 1/min
Power consumption P_1 min	85 W
Power consumption P_1 max	200 W
Emitted interference	EN 61000-6-3
Interference resistance	EN 61000-6-2
Protection class motor	IPX4D
Insulation class	H
Threaded cable connection	1 x PG13.5
Motor protection	Internal protection overheating WSK

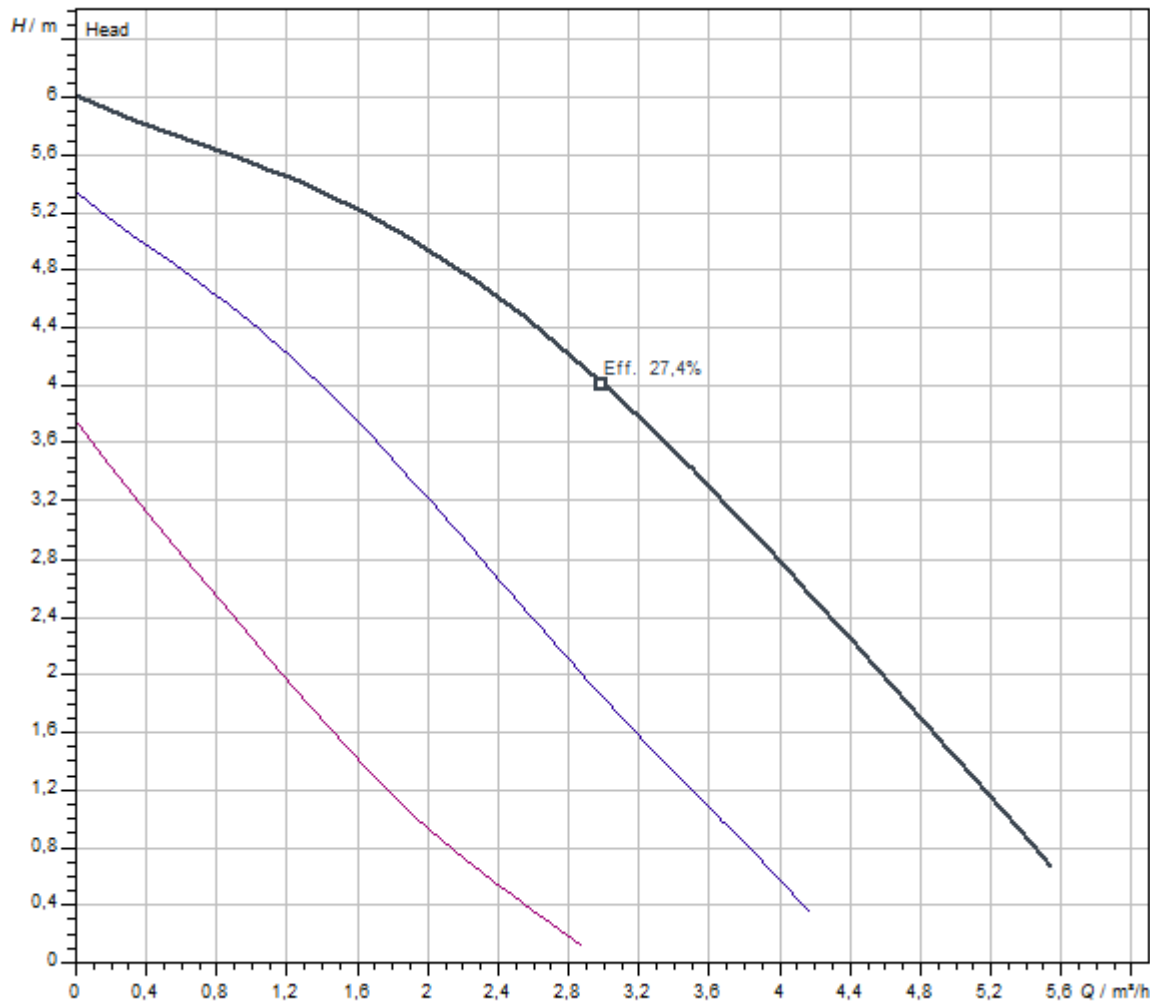
Materials

Pump housing	Stainless steel
Impeller	PPE-GF30
Shaft	Oxide ceramic
Bearing	Carbon, synthetic resin-impregnated

Installation dimensions

Pipe connection on the suction side DNs	G 1½
Pipe connection on the discharge side DNd	G 1½
Port-to-port length $L0$	180 mm

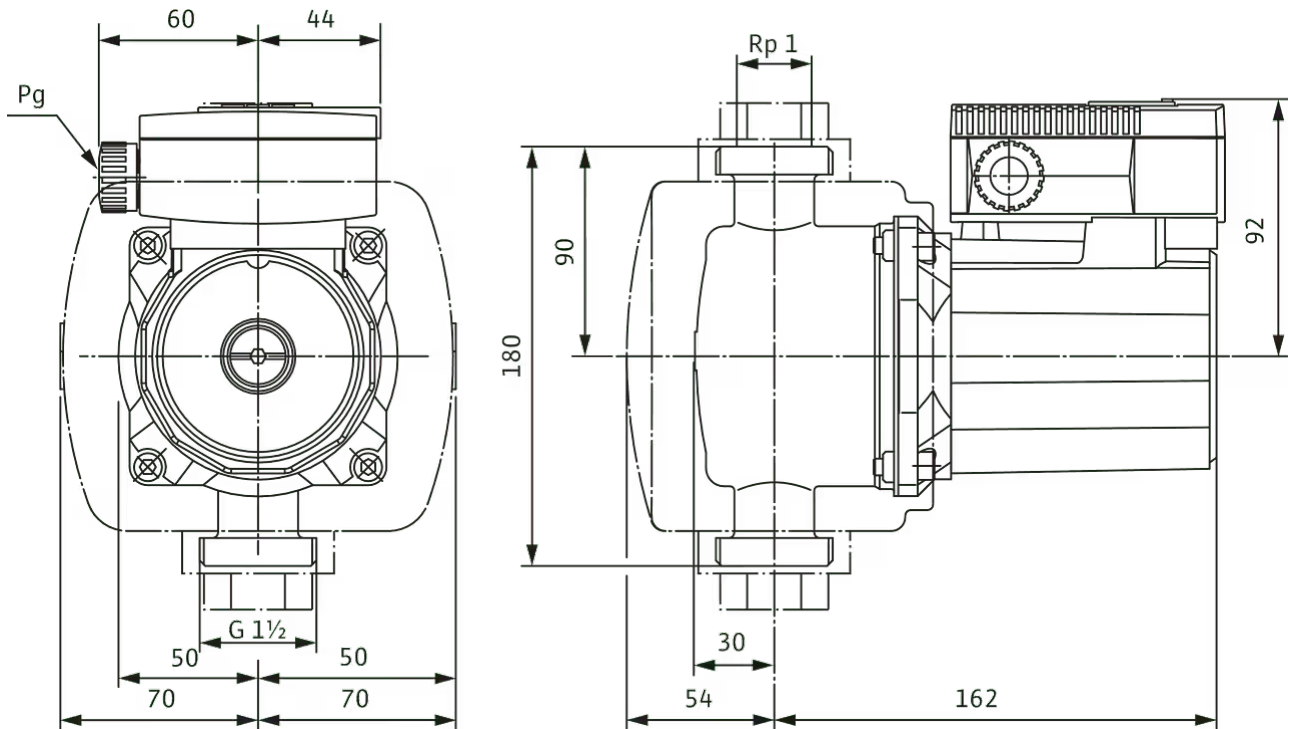
Pump curves



Fluid media	Water 100 %
Fluid temperature T	20,00 °C
speed at duty point <i>n hydr. @ OP</i>	2.390 1/min

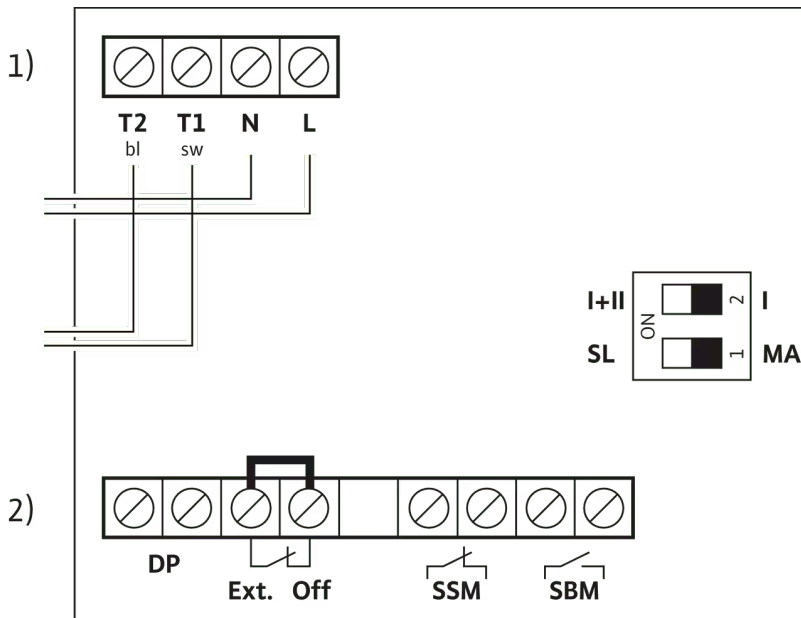
Dimensions and dimensions drawings

TOP-Z



Wiring diagram

Protect-Modul

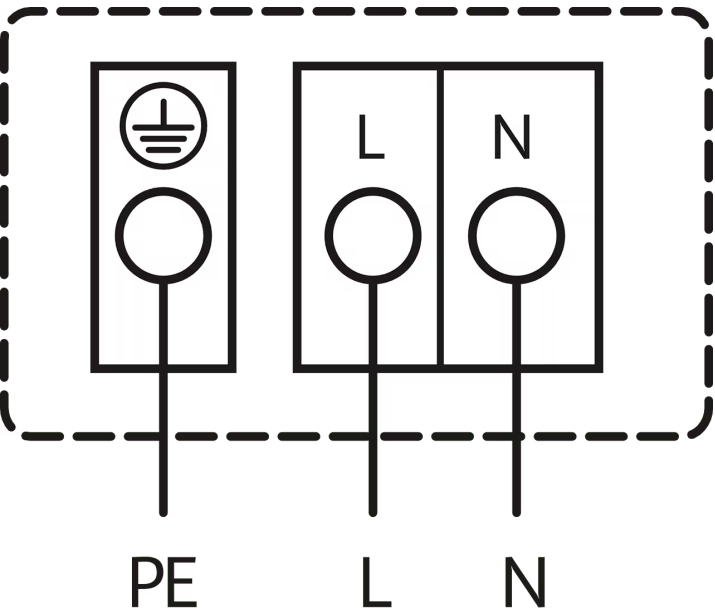


1) Mains terminals

2) Control terminals

Wiring diagram

≤ (P) 90 W



Mains connection 1~230 V, 50 Hz


internal protection against unacceptably high winding temperatures

Triggering: Internal interruption of motor voltage

Reset: Automatic after motor has cooled down

Ordering information

Product data

Brand	Wilo
Product description	TOP-Z 25/6 (1~230 V, PN 10, Inox)
Article number	2045521 
EAN number	4016322652786
Colour	green/silver
Minimum order quantity	1
Date of sales availability	2010-01-01

Packaging

Packaging type	Cardboard box
Packaging property	Transport packaging
Pieces per pallet	96
Number per layer	16

Dimension, weight

Length with packaging	270 mm
Length <i>L</i>	180 mm
Height with packaging	215 mm
Height <i>H</i>	216 mm
Width with packaging	178 mm
Width <i>W</i>	140 mm
Gross weight, approx. <i>m</i>	4.1 kg
Net weight, approx. <i>m</i>	3.4 kg

Tender text

This circulator is suitable only for drinking water.

Can be used for domestic hot water circulation systems in the industry and building services.

Glandless circulator with screwed or flange connection, preselectable speed stages for power adjustment.

Equipment and function

- > Manual power adjustment with 3 speed stages
- > Pumps with 1~ motor:
 - > P2 up to 90 W: internal protection against unacceptably high winding temperatures
 - > P2 = 180 W: Full motor protection with thermal winding contacts in conjunction with tripping unit
- > Pumps with 3~ motor:
 - > P2 up to 90 W: internal protection against unacceptably high winding temperatures
 - > P2 ≥ 180 W: Full motor protection with integrated trip electronics
- > Fault signal light
- > Contact for collective fault signal
- > Direction of rotation signal lamp
- > Mains connection 3~, 230 V with optional switching plug
- > Pump housing in red brass or grey cast iron (stainless steel depending on type)
- > PN 6/PN 10 combination flange (for DN 40 to DN 65)
- > Thermal insulation shells
- > Additional functions by retrofittable Protect Module C:
 - > SSM fault signal as potential-free NC contact
 - > SBM run signal as potential-free NO contact
 - > "Overriding Off" control input via external potential-free contact (NC contact)
 - > Blocking detection
 - > Full motor protection with tripping unit
 - > Fault acknowledgement
- > Dual pump management (two single pumps installed in parallel): Main/standby operation (automatic fault-actuated switchover/time-dependent pump cycling)

Operating Data

Max. fluid temperature T_{\max}	65 °C
Min. fluid temperature T_{\min}	0 °C
Min. ambient temperature T_{\min}	0 °C
Max. ambient temperature T_{\max}	40 °C
Temperature range at max. ambient temperature +40 °C T	-20...+110
Maximum operating pressure PN	10 bar

Operating Data

Max. permitted total water hardness	3.57 mmol/l (20°dH) (3.21 mmol/l (18°dH) for 20/4 + 25/6)
-------------------------------------	---

Motor data

Emitted interference	EN 61000-6-3
Interference resistance	EN 61000-6-2
Mains connection	1~230 V, 50 Hz
Power consumption $P_{1\max}$	200 W
Max. speed n_{\max}	2390 1/min
Rated current I_N	1 A
Protection class motor	IPX4D
Threaded cable connection	1 x PG13.5


Materials

Pump housing	Stainless steel
Impeller	PPE-GF30
Shaft	Oxide ceramic
Bearing	Carbon, synthetic resin-impregnated

Installation dimensions

Pipe connection on the suction side DN_s	G 1½
Pipe connection on the discharge side DN_d	G 1½
Port-to-port length L_0	180 mm

Ordering information

Brand	Wilo
Product description	TOP-Z 25/6 (1~230 V, PN 10, Inox)
Net weight, approx. m	3.4 kg
Article number	2045521 

Electrical accessories**Pump control****Timer switch SK 601N**

Switchgear SK 601N	2120443
--------------------	---------

Motor protection**SK 602N**

Switchgear SK 602N	2120444
--------------------	---------

SK 622N

Switchgear SK 622N	2120445
--------------------	---------

Services

With Wilo as your partner, you can not only be sure of choosing high-quality product solutions, but also of benefiting from a comprehensive, worry-free package of well thought-out services. We collaborate to develop a service concept tailored to your individual needs; with our expertise and personal consultancy, we make sure that the operation of your systems is as energy-efficient, reliable and economical as possible. All the while our competent Wilo service technicians are ready to assist you with fast, reliable and on-time support.

Recommended services

Wilo-Live Assistant Service	2216415
System Optimisation Glandless pumps	2219250
Energy Solutions Glandless pumps	2219285

More suitable services

Extended Warranty Glandless pumps	2219589
Supervision Glandless pumps	2219320
Installation Glandless pumps	2219355
Commissioning Glandless pumps	2219390
Maintenance BASIC Glandless pumps	2219530
Maintenance COMFORT Glandless pumps	2219416
Maintenance PREMIUM Glandless pumps	2219545
Repair Glandless pumps	2219609